

# **FESTO IPC Communication Server**

for Microsoft Windows  
and InTouch Applications

**User Manual  
Ver 1.x Rev 1.2  
DR420 10  
DR420 11**

**KLINKMANN AUTOMATION  
P.O. Box 38  
FIN-00371 Helsinki Finland  
tel. int. + 358 9 5404940  
fax int. + 358 9 5413541  
[www.klinkmann.com](http://www.klinkmann.com)**

# Table Of Contents

Overview.....	1
Communication Protocols.....	2
Accessing Remote Items via the FESTO IPC Server.....	3
Installing the FESTO IPC Server.....	4
Installing the I/O Server Infrastructure .....	5
Configuring the FESTO IPC Server.....	6
Server Settings Command.....	6
Socket Definition Command .....	8
Saving FESTOIPC Configuration File .....	10
Configuration File Location .....	10
Topic Definition Command.....	11
Item Names .....	12
Monitoring and Controlling Communication with a FESTOIPC device.....	14
Item/Point Naming Examples.....	16
Using FESTO IPC Server with Suite Link and DDE Clients .....	17
Using the FESTO IPC Server with InTouch .....	17
Defining the Access names .....	17
Defining the Tag Names .....	19
Monitoring the Status of Communication with InTouch.....	21
Notes on Using Microsoft Excel .....	22
Reading Values into Excel Spreadsheets.....	22
Writing Values to FESTOIPC Points.....	22
Using the FESTO IPC Server with OPC Clients.....	24
Configuring DCOM.....	24
Running FESTO IPC “OPC & DDE” version as Windows NT Service .....	26
Using the FESTOIPC with OPCLink Server.....	27
OPCLink Topic Definition.....	27
Accessing FESTOIPC Items via the OPCLink Server .....	28
Troubleshooting.....	29
WIN.INI entries.....	29
Troubleshooting menu .....	30

# FESTO IPC Communication Server

## Overview

The **FESTO IPC Communication Server** (hereafter referred to as the “FESTO IPC Server” or “FESTOIPC” or “Server”) is a Microsoft Windows application program that acts as a communication protocol server and allows other Windows application programs to access to data from FESTO FST Industrial PCs (IPCs), e.g. FEC FC34-FST, using TCP/IP communications. The FESTO IPC Server requires an Ethernet card and TCP/IP protocol installed on the computer to communicate with FESTO IPCs over the Ethernet network. The IPCs must have the FST TCP/IP driver v1.0 or higher installed and running to communicate with FESTO IPC Server. Any Microsoft Windows program that is capable of acting as a **DDE**, **FastDDE**, **SuiteLink** or **OPC Client** may use the FESTO IPC Server.

There are two different FESTO IPC Server versions described in this manual:

- Server version (ordering number DR 420 10) supporting SuiteLink, FastDDE and DDE protocols; this version hereafter is referred to as the “**Suite Link & DDE**” version.
- Server version (ordering number DR 420 11), supporting OPC and DDE protocols; this version hereafter is referred to as the “**OPC & DDE**” version;

The separate installation package is supplied for each version of the Server. In all cases the name of Server executable file is **FESTOIPC.EXE**. All further information in this manual is same for all versions of the Server, with the exception of few points where communication protocol specific features are explained.

## Communication Protocols

**Dynamic Data Exchange (DDE)** is a communication protocol developed by Microsoft to allow applications in the Windows environment to send/receive data and instructions to/from each other. It implements a client-server relationship between two concurrently running applications. The server application provides the data and accepts requests from any other application interested in its data. Requesting applications are called clients. Some applications such as Wonderware InTouch and Microsoft Excel can simultaneously be both a client and a server.

**FastDDE** provides a means of packing many proprietary Wonderware DDE messages into a single Microsoft DDE message. This packing improves efficiency and performance by reducing the total number of DDE transactions required between a client and a server. Although Wonderware's FastDDE has extended the usefulness of DDE for our industry, this extension is being pushed to its performance constraints in distributed environments. The FESTO IPC Server "Suite Link & DDE version" supports the FastDDE Version 3 -- an extension to Wonderware's proprietary FastDDE Version 2. This extension supports the transfer of Value Time Quality (VTQ) information. The original DDE and FastDDE Version 2 formats are still supported, providing full backward compatibility with older DDE clients. FastDDE Version 3 works on Windows 9x systems as well as Windows NT systems.

**NetDDE** extends the standard Windows DDE functionality to include communication over local area networks and through serial ports. Network extensions are available to allow DDE links between applications running on different computers connected via networks or modems. For example, NetDDE supports DDE between applications running on IBM compatible computers connected via LAN or modem and DDE-aware applications running on non-PC based platforms under operating environments such as VMS and UNIX.

**SuiteLink** uses a TCP/IP based protocol and is designed by Wonderware specifically to meet industrial needs such as data integrity, high-throughput, and easier diagnostics. This protocol standard is only supported on Microsoft Windows NT 4.0 or higher. SuiteLink is not a replacement for DDE, FastDDE, or NetDDE. The protocol used between a client and a server depends on your network connections and configurations. SuiteLink was designed to be the industrial data network distribution standard and provides the following features:

- Value Time Quality (VTQ) places a time stamp and quality indicator on all data values delivered to VTQ-aware clients.
- Extensive diagnostics of the data throughput, server loading, computer resource consumption, and network transport are made accessible through the Microsoft Windows NT operating system Performance Monitor. This feature is critical for the scheme and maintenance of distributed industrial networks.
- Consistent high data volumes can be maintained between applications regardless if the applications are on a single node or distributed over a large node count.
- The network transport protocol is TCP/IP using Microsoft's standard WinSock interface.

**OPC** (OLE for Process Control) is an open interface standard to provide data from a data source and communicate the data to any client application in a common standard way. The OPC is based on Microsoft OLE, COM and DCOM technologies and enables simple and standardised data interchange between the industrial or office sector and the production sector. From general point of view many aspects of OPC are similar to DDE, but main difference is in the implementation by using Microsoft's COM (Component Object Model) technology. It enables fast exchange with process automation data and OPC open interface allows access to data from OPC Server in same standard way from OPC client applications supplied by different developers.

For more information on the basics of OPC, please refer to the **OPC Specification**. The OPC Data Access Custom Interface Specification is maintained by **OPC Foundation**, the current specification is 2.04 dated September 2000.

The OPC support for FESTO IPC Server "OPC & DDE" version is implemented based on **FactorySoft OPC Server Development Toolkit** and it conforms to OPC Data Access Custom Interface Specification 2.04. The FESTO IPC Server "OPC & DDE" version is tested for compliance and is compatible with OPC Foundation OPC Data Access Compliance Test Tool.

The Suite Link, FastDDE (Version 3) and DDE support for FESTO IPC Server "Suite Link & DDE" version is implemented by **Wonderware I/O Server Toolkit** ver. 7.0 (060).

The FastDDE (Version 2) and DDE support for FESTO IPC Server "OPC & DDE" version is implemented by **Wonderware I/O Server Toolkit** ver. 5.0 (008).

## Accessing Remote Items via the FESTO IPC Server

The communication protocol addresses an element of data in a conversation that uses a three-part naming convention that includes the **application name**, **topic name** and **item name**. The following briefly describes each portion of this naming convention:

### **application name**

The name of the Windows program (Server) that will be accessing the data element. In the case of data coming from or going to FESTO IPCs, the application portion of the address is **FESTOIPC**.

### **topic name**

Meaningful names are configured in the Server to identify specific devices. These names are then used as the topic name in all conversations to that device. For example, **Node1**. **Note.** You can define multiple topic names for the same device to poll different items at different rates.

### **item name**

Item is a specific data element within the specified topic. For the FESTO IPC Server, an item can be a flag, input, output, register, timer, etc. in the FESTO IPC (the item/point names are fixed by the FESTO IPC Server as described in the **Item Names** section). **Note.** In some cases, the term "point" is used interchangeably with the term "item".

# Installing the FESTO IPC Server

## Installing the Server

The FESTOIPC Server installation package can be supplied:

1. As a self-extracting archive (42010xxx.EXE for "Suite Link & DDE" version or 42011xxx.EXE for "OPC & DDE" version) if downloaded from Klinkmann's web site (the xxx is the current (latest) version of the Server).
2. From installation on CD.
3. On two or three distribution disks (floppies).

To **install** the FESTOIPC Server from the self-extracting archive, run the 42010xxx.EXE or 42011xxx.EXE and proceed as directed by the FESTO IPC Server Setup program.

To **install** the FESTO IPC Server from CD or distribution disks, on MS Windows (NT, 2000, XP or 9x):

1. Insert the CD with Klinkmann Software into CD drive or insert the FESTO IPC Server Disk1 into a floppy drive A: or B:.
2. Select the **Run** command under the **Start** menu.
3. Run STARTUP.EXE if installing from CD or SETUP.EXE if installing from distribution disks (floppies).
4. If installing from CD: select "Protocol Servers (DDE, SuiteLink, OPC)", find "FESTO IPC SL and DDE Server" or "FESTO IPC OPC and DDE Server" and click on "Setup...".
5. Proceed as directed by FESTO IPC Server Setup program.

### Notes.

1. *If installing the FESTO IPC Server "OPC & DDE" version on Windows 95 then DCOM (Distributed COM) must be installed on Windows 95 before installing the FESTO IPC Server. The DCOM update can be obtained, for example, from the Microsoft's web site <http://www.microsoft.com/com/dcom95/> or from Microsoft Visual C++ 5.0 and 6.0 CDs. Before starting the FESTO IPC Server the DCOM must be configured). See **Configuring DCOM** section in this manual for details.*
2. *All MS Windows (both NT and 9x) applications using Microsoft's shared DLLs (e.g. MFC42.DLL and MSVCRT.DLL) must be closed before installing the FESTO IPC Server "OPC & DDE" version. Otherwise there can be problems with FESTO IPC Server registration as OPC server. If during the FESTO IPC Server "OPC & DDE" version installation some warning messages about shared DLLs are displayed, then it is quite possible the FESTO IPC Server registration as OPC server failed. In this case after system reboot the FESTO IPC Server registration can be done by starting the FESTO IPC Server manually with special command line parameter added: "FESTOIPC/Regserver".*

When installation is finished, the subdirectory specified as a folder where to install the FESTO IPC Server files will contain the following files:

**FESTOIPC.EXE**      The FESTO IPC Server Program. This is a Microsoft Windows 32-bit application program.

<b>FESTOIPC.HLP</b>	The FESTO IPC Server Help file.
<b>FESTOIPC.CFG</b>	An example configuration file.
<b>LICENSE.TXT</b>	Klinkmann Automation software license file.
<b>KLSERVER.DLL</b>	Dynamic Link Library necessary for “OPC & DDE” version of the Server.
<b>WWDLG32.DLL</b>	Dynamic Link Library necessary only for “OPC & DDE” version of the Server.

To **uninstall** the FESTO IPC Server, start Control Panel, select “Add/Remove Programs” and select the “FESTOIPC SL and DDE Server” or “FESTOIPC OPC and DDE Server” from the list of available software products. Click on **Add/Remove...** and proceed as directed by the UnInstallShield program.

#### **Notes.**

1. *The FESTO IPC Server “Suite Link & DDE” version is developed with Wonderware I/O Server Toolkit (ver 7.0) and needs the **Wonderware FS2000 Common Components** to be installed on computer where the FESTO IPC Server is running. The Wonderware FS2000 Common Components are installed automatically when any of Wonderware FS2000 Components (e.g. InTouch or some Wonderware I/O server) is installed.*
2. *If FESTOIPC Server “Suite Link & DDE” version will run on PC where Wonderware FS2000 Common Components are not installed then a special **I/O Server Infrastructure installation package** can be obtained from Klinkmann Automation (see **Installing the I/O Server Infrastructure** section below). This I/O Server Infrastructure installation package contains the minimum set of software needed to run the FESTO IPC Server “Suite Link & DDE” version and these infrastructure files must be install prior to executing the FESTO IPC Server.*
3. *The HASP key is needed for full time running of FESTO IPC Server. The HASP Driver setup is performed during the Server setup. Without HASP Driver installed the FESTO IPC Server will run only 1 hour (with all features enabled).*

## **Installing the I/O Server Infrastructure**

The I/O Server Infrastructure installation package can be supplied:

1. As a self-extracting archive (IOServerInfrastructure.exe) if downloaded from Klinkmann’s web site.
2. On one distribution disk (floppy).

To **install** the I/O Server Infrastructure from the self-extracting archive, run the IOServerInfrastructure.exe and proceed as directed by the I/O Server Infrastructure Setup program.

To **install** the I/O Server Infrastructure from the distribution disk, on MS Windows (NT or 9x):

1. Insert the I/O Server Infrastructure disk into a floppy drive A: or B:.
2. Select the **Run** command under the **Start** menu.
3. Type "A:SETUP" or "B:SETUP".
4. Click on **OK**.
5. Proceed as directed by the I/O Server Infrastructure Setup program.

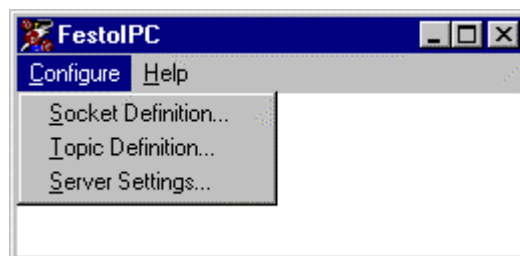
To **uninstall** the I/O Server Infrastructure, start Control Panel, select "Add/Remove Programs" and select the "IO Server Infrastructure" from the list of available software products. Click on "Add/Remove..." and proceed as directed by the UnInstallShield program.

**Note.** *The I/O Server Infrastructure installation will be rejected if Wonderware FS2000 Common Components are already installed on same computer.*

## Configuring the FESTO IPC Server

After the FESTO IPC Server is initially installed, a small amount of configuration is required. Configuring the Server automatically creates a **FESTOIPC.CFG** file, which holds all the topic definitions, entered, as well as the communication port configurations. This file will automatically be placed in the same directory in which **FESTOIPC.EXE** is located unless the path where the configuration file will be placed is a specified by the /Configure/Server Settings... command.

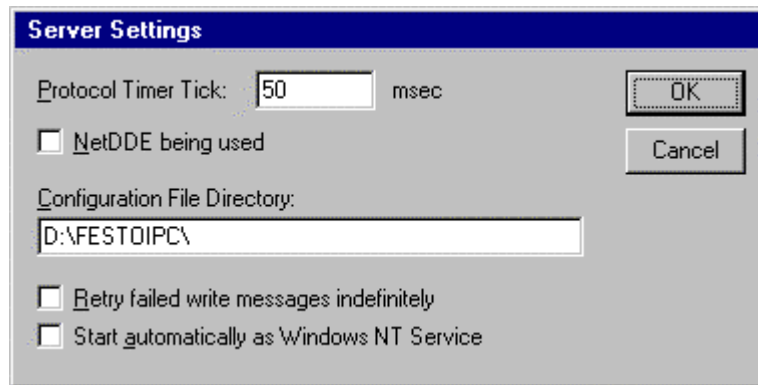
To perform the required configurations, start up the FESTOIPC. If the Server starts up as an icon, double-click on the icon to open the server's window. To access the commands used for the various configurations, open the /Configure menu:



## Server Settings Command

A number of parameters that control the internal operation of the Server can be set. In most cases, the default settings for these parameters provide a good performance and do not require changing. However, they can be changed to fine-tune the Server for a specific environment.

To change the Server's internal parameters, invoke the /Configure/Server Settings... command. The "Server Settings" dialogue box will appear:



The following describes each field in this dialogue box:

### **Protocol Timer Tick**

This field is used to change the frequency at which the Server is continuously activated (the Server checks for work to do). At this frequency the Server tries to send one data request to IPC and receive one reply from IPC. If the send/response cycle is too long then more than one activation of Server is necessary to process it. If computer is very busy or some other MS Windows application is taking over the computer then the Server is activated rarely than setting in the **Protocol Timer Tick**.

**Note:** The default value is 50 milliseconds. The minimum value is 10 milliseconds.

### **NetDDE being used**

Select this option if you are in network using NetDDE.

### **Configuration File Directory**

The first field is used to specify the path (disk drive and directory) in which FESTOIPC will save its current configuration file. FESTOIPC will use this path to load the configuration file the next time it is started.

#### **Notes.**

1. Only the "path" may be modified with this field. The configuration file is always named **FESTOIPC.CFG**.
2. There is no limit to the number of configuration files created, although each must be in a separate directory. When using the FESTO IPC Server with **InTouch**, it is a good practice to place the configuration file in the application directory.

### **Retry failed write messages indefinitely**

This field is used to disable the deleting of pending write messages when *slow poll mode* on some topic is started. As default all write messages for this topic are deleted when topic enters the slow poll mode.

**Note.** Be careful when using this setting if IPC device is switched off or disconnected, but client application continues to generate new values to be written to this IPC -- it can cause the computer memory overload with memory allocated for write messages.

### **Start automatically as Windows NT Service**

Enabling this option will cause the FESTO IPC Server "Suite Link & DDE" version to start as a Windows NT service.

Windows NT offers the capability of running applications even when a user is not logged on to the system. This is valuable when systems must operate in an unattended mode.

Enabling this option and rebooting the system will cause the Server to run as a Windows NT service. However, to view configuration information or to reconfigure the Server, the user must log on to the system. Any Server related problems that may arise such as missing adapter cards, licensing failures or device drivers not loading will not be visible to the user until a log on is performed. Disabling this option and rebooting the system will cause the Server to run as a Windows NT application program once again.

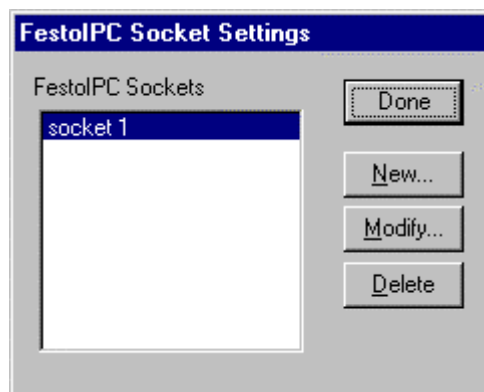
#### Notes.

1. The **Start automatically as Windows NT Service** feature can be activated only with FESTO IPC Server "Suite Link & DDE" version. To start the FESTO IPC Server "OPC & DDE" version as Windows NT Service, refer to **Running FESTO IPC "OPC & DDE" version as Windows NT Service** section of this manual.
2. The Service Startup configuration can be changed by MS Windows NT **Control Panel/Services** configuration dialogs. The **Allow Service to Interact with Desktop** checkbox in "Service" dialogue box must be checked (the "Service" dialogue box can be invoked by pressing the **Startup...** button on "Services" dialogue box when Service **FESTOIPC\_IOServer** is selected). If **Allow Service to Interact with Desktop** is not selected then FESTOIPC Server full functionality is not ensured (e.g. the Server configuration can not be changed, no message boxes will be displayed, etc.).

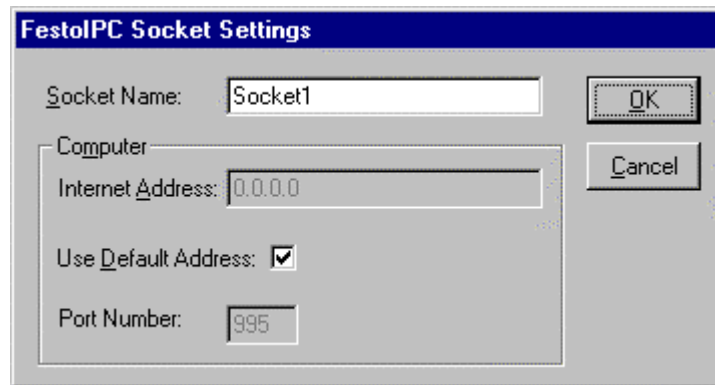
When all entries have been made, click on **OK**.

## Socket Definition Command

To configure the Socket used for communications with IPCs, invoke the `/Configure/Socket Definition...` command. The "FestoIPC Socket Settings" first dialog box will appear:



To modify or examine an existing Socket, select the topic name and click on **Modify**. To define a new Socket, click on **New**. The "FestoIPC Socket Settings" second dialog box will appear:



The following describes each dialog field in this dialog box:

### Socket Name

Enter the Socket name and later use it in *Topic Definition*. Each Socket must have the unique **Internet Address** defined.

### Internet Address

Enter the Computer Internet Address (IP Address) if it has more than one. If there is only one Internet Address for computer then **Use Default Address** can be checked to use this IP Address. If Computer is multi-homed (more than one Internet Address used) and **Use Default Address** is checked then it is impossible to know which IP Address must be used.

### Note!

*Actually two sockets are created for each configured FESTOIPC Socket: one socket with port number **995** used for EasyIP (EasyNet) data exchange protocol and another socket with port number **991** used for accessing IPCs by CI (Command Interpreter) commands. Refer to **Item Names** section where is described which data is accessed by EasyIP protocol and which data is accessed by CI commands.*

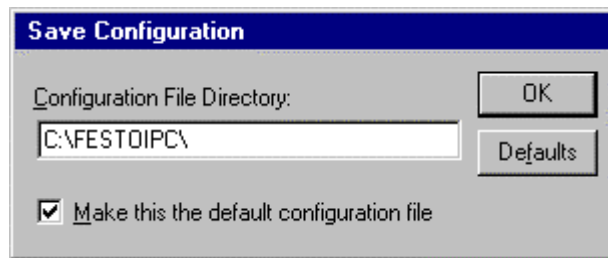
Once all entries have been made, click on **OK** to process the configuration for the Socket. The "FestoIPC Socket Settings" first dialog box will appear again.

Click on **Done** when configuration for all Sockets has been performed.

**Note:** *If this is the first time the Sockets have been configured, the user will be prompted to save configuration to an existing directory.*

## Saving FESTOIPC Configuration File

If the configuration file does not currently exist, or a new configuration path has been specified, the Server will display the "Save Configuration" dialogue box:



This dialogue box displays the path where the Server is going to save the current configuration file. The path may be changed if necessary. Also, the path can optionally be recorded in the **WIN.INI** file by selecting the **Make this the default configuration file** option. Doing so it will allow the FESTO IPC Server to find the configuration file automatically each time it is started.

## Configuration File Location

When the FESTO IPC Server starts up, it first attempts to locate its configuration file by, first checking the **WIN.INI** file for a path that was previously specified. If the path is not present in the **WIN.INI** file, the Server will assume that the current working directory is to be used.

To start the Server from an application directory configuration file other than the default configuration file a special switch (**/d:**) is used. For example, invoke the **Start/Run** command and enter the following:

**FESTOIPC /d:c:\directoryname**

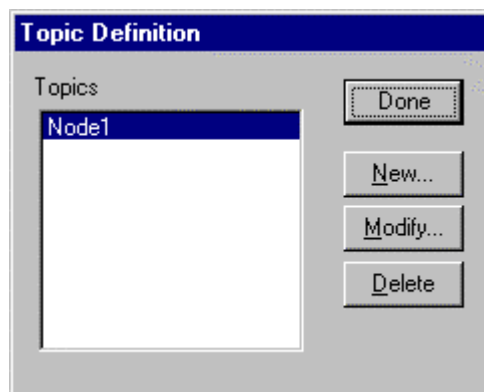
**Note.** *There is no limit to the number of configuration files that may be created, although each must be in a separate directory.*

## Topic Definition Command

The user provides each IPC with an arbitrary name that is used as the Topic Name for all references to this IPC.

The following steps are taken to define the topics (FESTO IPCs) to be accessed from FESTO IPC Server:

Invoke the Configure/Topic Definition... command. The "Topic Definition" dialog box will appear:



To modify an existing topic, select the topic name and click on **Modify**. To define a new topic, click on **New**. The "FestoIPC Topic Definition" dialog box will appear:

### Topic Name

Enter the **Topic Name**.

**Note:** If using *InTouch*, the same Topic Name is to be entered in the "Add Access Name" dialog box described in the **Using the FESTO IPC Server with InTouch** section.

### Socket Name

Select the Socket to associate it with the topic. Additional topics (FESTO IPCs) may be associated with the same Socket at a later time.

### IPC Internet Address

Enter the IPC Internet Address (IP Address) to communicate with.

### Update Interval

Set the **Update Interval** field to indicate the frequency the items/points on this topic (FESTO IPC) must be read (polled); at this frequency all this topic data request commands will be sent to the network and replies must be received and processed.

### Reply Timeout

Enter the amount of time (in seconds) the IPC will be given to reply to commands from the Server.

**Note:** *The default value of 3 seconds should be sufficient for most configurations.*

Once all entries have been made, click on **OK** to process the configuration for the Topic. The "Topic Definition" dialog box will appear again.

Select **Done** when configuration for all Topics has been performed.

## Item Names

Within the FESTO IPC Server, item/point naming depends on operand naming conventions used in FESTO Industrial PCs. The following operands are supported:

- **Flag words and bits**
- **Input words and bits**
- **Output words and bits**
- **Register words**
- **Timers, timer preselections and timer words**
- **Counters, counter preselections and counter words**
- **Program status**
- **Error**

The general syntax of item name is:

**<operand name><address>[.<bit address>] [suffix]**

where

- operand name** - one or two characters (both uppercase and lowercase letters can be used), which determines the operand type;
- address** - determines the operand address or number;
- bit address** - can be used to specify the bit address (0...15) for flag bits, input bits and output bits;
- suffix** - can be used to specify the signed type for word operands (suffix **s**) or to specify the length of string for *concatenated* flag words (suffix **:n** where **n** is the number of concatenated flag words).

The following table lists the range of supported items for FESTO IPC Server:

Operand type	Address range	Item Type	Value Range*	Protocol
Flag bits	M0.0 ... M9999.15	Discrete	0, 1	EasyIP for read CI for write
Flag words	MW0 ... MW9999	Integer	0...65535 (-32768...32767)	EasyIP
Concatenated Flag words**	MWx:n	Message (String)	x = 0...9999 n = 1...256	EasyIP
Input bits	E0.0 ... E255.15	Discrete	0, 1	EasyIP for read CI for write
Input words	EW0 ... EW255	Integer	0...65535 (-32768...32767)	EasyIP
Output bits	A0.0 ... A255.15	Discrete	0, 1	EasyIP for read CI for write
Output words	AW0 ... AW255	Integer	0...65535 (-32768...32767)	EasyIP
Registers	R0 ... R255	Integer	0...65535 (-32768...32767)	EasyIP
Timers	T0 ... T255	Discrete	0, 1	CI
Timer preselections	TV0 ... TV255	Integer	0...65535	EasyIP
Timer words	TW0 ... TW255	Integer	0...65535	CI
Counters	Z0 ... Z255	Discrete	0, 1	CI
Counter preselections	ZV0 ... ZV255	Integer	0...65535	CI
Counter words	ZW0 ... ZW255	Integer	0...65535	CI
Program status	P0 ... P63	Message (String)	6 values separated by commas, e.g. "0,0,0,0,0,0" for inactive program	CI
Error	F	Message (String)	3 values separated by commas, e.g. "59,3,24"	CI

(\*) Value range 0...65535 - for unsigned integers (item/point without suffix "s" ("S")); value range -32768...32767 - for signed integers (item/point with suffix "s" ("S")).

(\*\*) For concatenated Flag words **x** is the start address and **n** is the number of words. The string containing concatenated Flag words is the binary representation of these Flag words in the following byte order: first (start) Flag word low byte, first (start) Flag word high byte, ..., last (end) Flag word low byte, last (end) Flag word high byte.

**Notes:**

1. The IPCs must have the FST TCP/IP driver **v1.0** or higher installed and running to communicate with FESTO IPC Server (the FST TCP/IP driver versions lower than v1.0 does not support EasyIP protocol accessing to some operand addresses).
2. With EasyIP protocol maximum **256** consecutive words can be read by one command. So, only one read command is needed for Inputs, Outputs, Registers and Timer preselections. The Server uses the following system to create EasyIP read commands for Flag operands: operands with addresses 0...255 (first read addresses area) can be read in first command, addresses 256...511 (second read addresses area) in the second, etc. Thereby for Flags it is highly recommended to use consecutive addresses to reduce the total amount of read commands sent to the network - this will considerably improve the performance of the Server.
3. For concatenated Flag words the additional read command will be created if item belongs to two read addresses areas (e.g. **MW505:15** belongs to second and third read addresses area). The using of such items is not recommended.

## Monitoring and Controlling Communication with a FESTOIPC device

For each topic, there are following build-in items offered by FESTO IPC Server to monitor and control the communication with FESTO IPCs.

### STATUS

For each topic, there is a built-in discrete item that indicates the state of communication with IPC. The discrete item **STATUS** is set to **0** when communication fails and set to **1** when communication is successful. The **STATUS** value is set to 0 after 3 consecutive unsuccessful retries to communicate with this IPC.

From **InTouch** the state of communication may be read by defining an I/O Discrete tagname and associating it with the topic configured for this IPC and using **STATUS** as the item name.

From **Excel**, the status of the communication may be read by entering the following formula in a cell:

**=FESTOIPC|topic!STATUS**

where **topic** is the name of topic (e.g. Node1) configured for IPC.

### UPDATEINTERVAL

The **UPDATEINTERVAL** item is an Integer type Read/Write item used to access the currently set Update Interval (see **Topic Definition Command** section). It indicates the current requested update interval (in milliseconds). The value of this item can be read through DDE, Suite Link or OPC. Client can poke new values to this item. The range of valid values is from 10 to 2147483647 milliseconds.

## MAXINTERVAL

The **MAXINTERVAL** item is an Integer type Read Only item used to access the measured maximum update interval (in milliseconds) of all items for the corresponding topic for the last completed poll cycle. The range of valid values is from 0 to 2147483647 milliseconds.

The **UPDATEINTERVAL** and **MAXINTERVAL** items can be used to tune the performance of communication.

## ITEMCOUNT

The **ITEMCOUNT** item is an Integer type Read Only item used to access the number of active items in the corresponding topic. The range of valid values is from 0 to 2147483647.

## ERRORCOUNT

The **ERRORCOUNT** item is an Integer type Read Only item used to access the number of active items with errors in the corresponding topic. The range of valid values is from 0 to 2147483647.

## ERRORITEMS

The **ERRORITEMS** item is an Integer type Read/Write Only (unique for each topic) used to access the total number of items with invalid item names (these items are rejected by Server). The **ERRORITEMS** value can be reseted by writing 0 to this item. The range of valid values is from 0 to 2147483647.

## WRITECOUNT

The **WRITECOUNT** item is an Integer type Read Only item used to access the number of write commands (messages) waiting for execution. The range of valid values is from 0 to 2147483647.

For example, in following way the **WRITECOUNT** item can be used to avoid the increasing of memory occupied by not executed write commands:

- activate the hot link with **WRITECOUNT** item and start to monitor it;
- activate new write command (by poking new value) only if value of **WRITECOUNT** becomes equal to 0, e.g., all previous write commands are executed and memory occupied by them is freed.

## SUSPEND

Special Read/Write Discrete Item **SUSPEND** may be used to control the communication with a separate topic. If application changes **SUSPEND** value from 0 to 1 then communication with topic is suspended. If **SUSPEND** value is changed back to 0 then communication with this topic is resumed.

**Note:** *If topic is suspended by setting **SUSPEND** value to 1, then Server rejects all new write values to this topic, i.e., no new write messages are created after **SUSPEND** value has changed from 0 to 1.*

## Item/Point Naming Examples

The following examples show the **valid** item names:

M12.0 - Flag bit 0 in Flag word 12;  
MW255 - Flag word 255, unsigned;  
MW9999s - Flag word 9999, signed;  
MW10:50 - Concatenated 50 Flag words starting from Flag word 10;  
E5.14 - Input bit 14 in Input word 5;  
AW0 - Output word 0, unsigned;  
T22 - Timer number 22;  
ZV0 - Counter preselection number 0;  
P2 - Program status for program number 2.

The following examples show the **invalid** item names:

M50.16 -- Bit address out of range;  
R256 -- Operand address out of range;  
MW100:257 -- Concatenated Flag word too long;  
PS10 -- Unsupported operand type.

## Using FESTO IPC Server with Suite Link and DDE Clients

The "Suite Link & DDE" version of FESTO IPC Server is accessible from Suite Link clients (e.g., InTouch) and DDE clients (e.g., Excel).

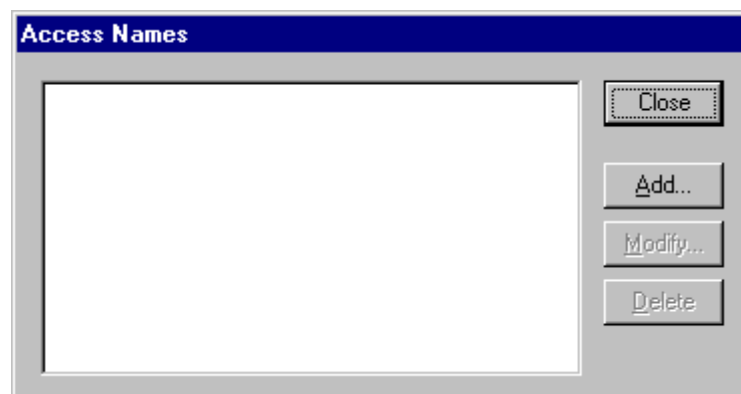
### Using the FESTO IPC Server with InTouch

To access to operands on FESTO IPCs from **InTouch**, the Access Names and Tag names should be defined in **WindowMaker**.

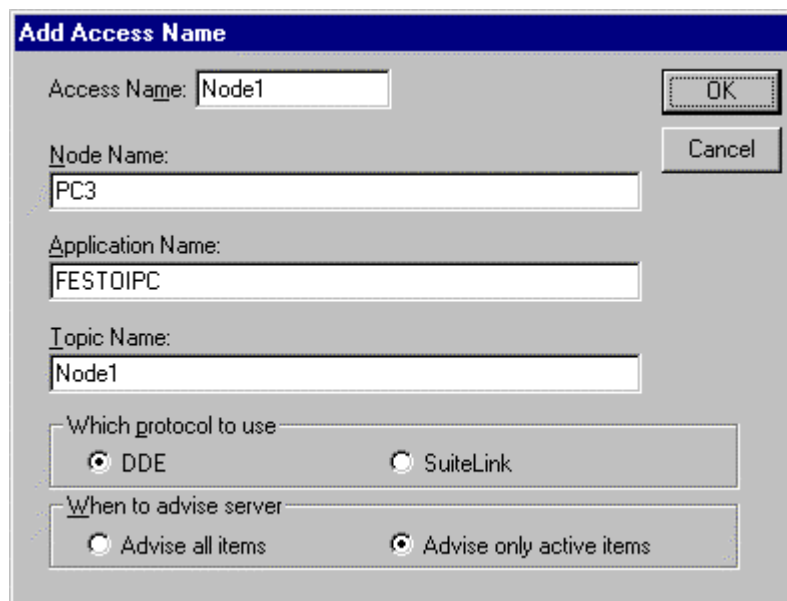
#### Defining the Access names

InTouch uses **Access Names** to reference real-time I/O data. Each Access Name equates to an I/O address, which can contain a **Node**, **Application**, and **Topic**. In a distributed application, I/O references can be set up as global addresses to a network I/O Server or local addresses to a local I/O Server.

To define the Access Names in WindowMaker node invoke the */Special/Access Names...* command. The "Access Names" dialogue box will appear.



Click on **Add...** The "Add Access Name" dialogue box will appear:



**Note.** If **Add** is selected, this dialogue box will be blank when it initially appears. Data has been entered here to illustrate the entries that are made.

The following fields are required entries when entering an Access Name Definition:

### **Access Name**

Enter an arbitrary name that will be used by **InTouch** to refer to the topic. For simplicity, it is recommended that the name defined for the topic in FESTOIPC Server also be to be used here.

### **Node Name**

If the data resides in a network I/O Server, in the Node Name box, type the remote node's name.

### **Application Name**

In the Application Name box, type the actual program name for the I/O Server program from which the data values will be acquired. In case the values are coming from the FESTO IPC Server the FESTOIPC is used. Do not enter the .exe extension portion of the program name.

### **Topic Name**

Enter the name defined for the topic in the FESTO IPC Server to identify the topic the FESTO IPC Server will be accessing. The Topic Name is an application-specific sub-group of data elements. In the case of data coming from a FESTO IPC Server program, the topic name is the exact same name configured for the topic in the FESTO IPC Server.

**Note:** This will usually be the same as the "Access Name", although, if desired, they may be different. However, it must be the same name used when the topics were configured in section **Configuring the FESTO IPC Server**.

### **Which protocol to use**

Select the protocol (**DDE** or **SuiteLink**) that you are using.

### **When to advise server**

Select **Advise all items** if you want the Server program to poll for all data whether or not it is in visible windows, alarmed, logged, trended or used in a script. Selecting this option will impact performance, therefore its use is not recommended.

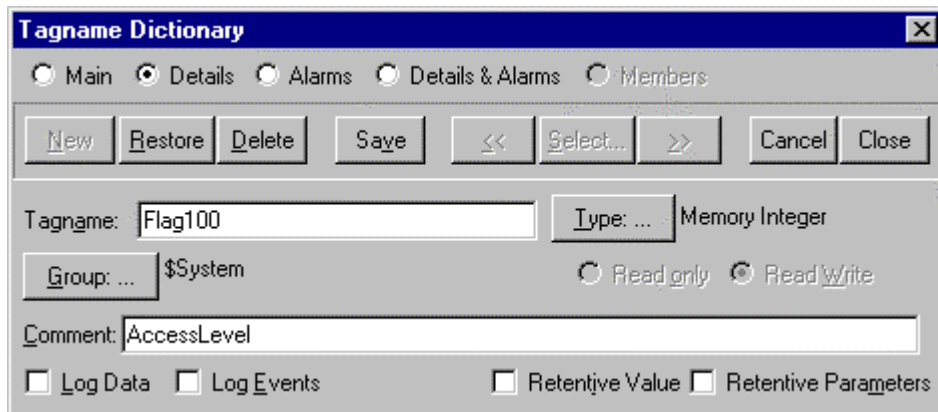
Select **Advise only active items** if you want the Server program to poll only points in visible windows and points that are alarmed, logged, trended or used in any script.

Click **OK** to accept the new Access Name and close the "Add Access Name" dialogue box. The "Access Names" dialogue box will reappear displaying the new Access Name selected in the list.

Click **Close** to close the "Access Names" dialogue box.

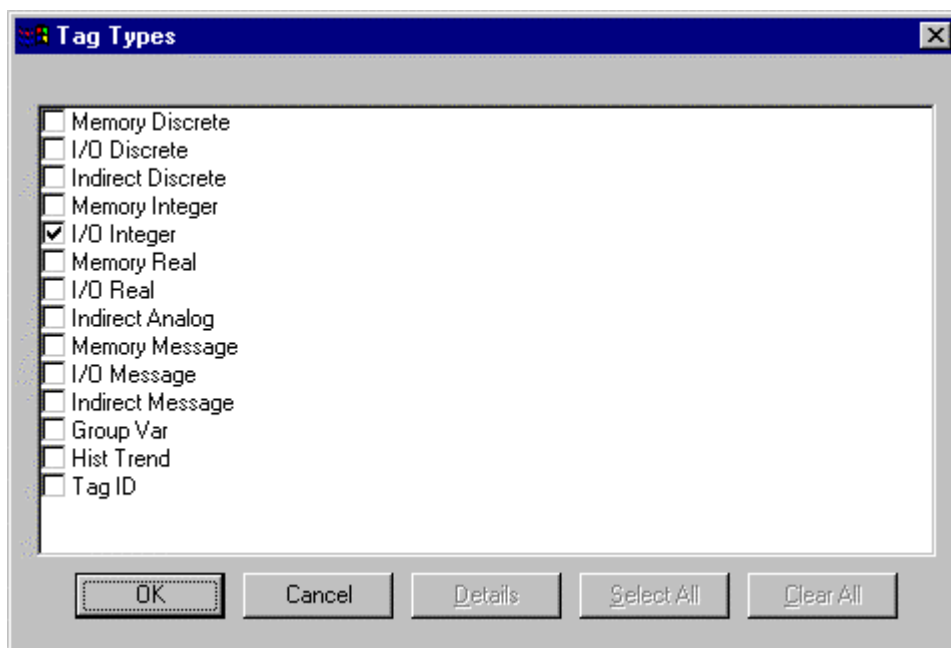
## Defining the Tag Names

To define the Tag names associated with the new "Access Name", invoke the */Special/Tagname Dictionary...* command (in **WindowMaker**). The "Tagname Dictionary" dialogue box will appear:



Click on **New** and enter the **Tagname**. (The tagname defined here is the name InTouch will use. The FESTO IPC Server does not see this name.)

Select the tag type by clicking on the **Type: ...** button. The "Tag Types" dialogue box will appear:



To access FESTOIPC device items, the type must be **I/O Discrete**, **I/O Integer** or **I/O Message**. Select the Tag type.

The "Details" dialogue box for the tagname will appear:

Initial Value:	<input type="text" value="0"/>	Min EU:	<input type="text" value="-32768"/>	Max EU:	<input type="text" value="32767"/>
Deadband:	<input type="text" value="0"/>	Min Raw:	<input type="text" value="-32768"/>	Max Raw:	<input type="text" value="32767"/>
Eng Units:	<input type="text"/>				Conversion
<input type="button" value="Access Name: ..."/> Unassigned				<input checked="" type="radio"/> Linear <input type="radio"/> Square Root	
Item:	<input type="text"/>				
<input type="checkbox"/> Use Tagname as Item Name					Log Deadband: <input type="text" value="0"/>

Select the Access name for FESTO IPC Server by clicking on the **Access Name: ...** button. The "Access Names" dialogue box will appear:

Access Names	
<input type="text" value="Node1"/>	<input type="button" value="Close"/>
<input type="button" value="Add..."/>	
<input type="button" value="Modify..."/>	
<input type="button" value="Delete"/>	

Select the appropriate Access Name and click on **Close**. (If the Access Name has not been defined as previously described, click on **Add...** and define the Access Name now.)

The "Details" dialogue box will appear displaying the selected Access Name:

Initial Value:	<input type="text" value="0"/>	Min EU:	<input type="text" value="-32768"/>	Max EU:	<input type="text" value="32767"/>
Deadband:	<input type="text" value="0"/>	Min Raw:	<input type="text" value="-32768"/>	Max Raw:	<input type="text" value="32767"/>
Eng Units:	<input type="text"/>				Conversion
<input type="button" value="Access Name: ..."/> Node1				<input checked="" type="radio"/> Linear <input type="radio"/> Square Root	
Item:	<input type="text"/>				
<input type="checkbox"/> Use Tagname as Item Name					Log Deadband: <input type="text" value="0"/>

For integers fill in the **Min EU**, **Max EU**, **Min Raw** and **Max Raw** fields. These fields control the range of values that will be accepted from the Server and how the values are scaled. If no scaling is desired, **Min EU** should be equal to **Min Raw** and **Max EU** equal to **Max Raw**.

Enter the FESTOIPC item name to be associated with this tagname in the Item: field in the "Details" box:

Initial Value:	<input type="text" value="0"/>	Min EU:	<input type="text" value="-32768"/>	Max EU:	<input type="text" value="32767"/>
Deadband:	<input type="text" value="0"/>	Min Raw:	<input type="text" value="-32768"/>	Max Raw:	<input type="text" value="32767"/>
Eng Units:	<input type="text"/>				Conversion
<input type="button" value="Access Name: ..."/> Node1					<input checked="" type="radio"/> Linear
					<input type="radio"/> Square Root
Item:	<input type="text" value="MW100"/>				
<input type="checkbox"/> Use Tagname as Item Name					Log Deadband: <input type="text" value="0"/>

(Refer to the **Item Names** section for complete details.)

Where applicable, the **Use Tagname as Item Name** option may be selected to enter automatically the tag name in this field.

**Note:** The tag name can only be used if it follows the conventions listed in the **Item Names** section.

Once all entries have been made, click on the **Save** button (in the top dialogue box) to accept the new tag name. To define additional tagnames click on the **New** button. To return to the **WindowMaker** main screen, select **Close**.

## Monitoring the Status of Communication with InTouch

**InTouch** supports built-in topic names called **DDEStatus** and **IOStatus** that are used to monitor the status of communications between the Server and InTouch. For more information on the built-in topic names DDEStatus and IOStatus, see your online "InTouch User's Guide".

The status of communication between the Server and InTouch can be read into **Excel** by entering the following DDE reference formula in a cell on a spreadsheet (in following examples **FSTIPC2** is the Topic Name configured for FESTO IPC Server):

**=view|DDEStatus!FSTIPC2**

or

**=view|IOStatus!FSTIPC2**

## Notes on Using Microsoft Excel

Data from FESTOIPC topics may be accessed from Excel spreadsheets. To do so, enter a formula like the following into a cell on the spreadsheet.

**=FESTOIPC|topic!item**

Sometimes, Excel requires the topic and/or item to be surrounded by apostrophes.

In the formula, **topic** must be replaced with one of the valid topic names defined during the Server configuration process. Replace **item** with one of the valid item names described in the **Item Names** section.

## Reading Values into Excel Spreadsheets

Values may be read directly into Excel spreadsheets by entering a DDE formatted formula into a cell, as shown in the following examples:

```
=FESTOIPC|'topic1'|'MW100'
=FESTOIPC|'Node4'|'E0.4'
=FESTOIPC|'FSTIPC12'|'TV8'
```

***Note:** Refer to the Microsoft Excel manual for complete details on entering Remote Reference formulas for cells.*

## Writing Values to FESTOIPC Points

Values may be written to the Server from Microsoft Excel by creating an Excel macro that uses the **POKE** command. The proper command is entered in Excel as follows:

```
channel=INITIATE("FESTOIPC","topicname")
=POKE(channel,"itemname", Data_Reference)
=TERMINATE (channel)
=RETURN()
```

The following describes each of the above **POKE** macro statements:

```
channel=INITIATE("FESTOIPC ","topicname")
```

Opens a channel to a specific topic name (defined in the Server) in an application with name FESTOIPC (the executable name less the .EXE) and assigns the number of that opened channel to **channel**.

***Note:** By using the **channel=INITIATE** statement the word **channel** must be used in the **=POKE** statement instead of the actual cell reference. The "**applicationname**" and "**topicname**" portions of the formula must be enclosed in quotation marks.*

```
=POKE(channel,"itemname", Data_Reference)
```

**POKEs** the value contained in the **Data\_Reference** to the specific operand in the FESTO IPC via the **channel** number returned by the previously executed **INITIATE** function. **Data\_Reference** is the row/column ID of the cell containing the data value. For "**itemname**", use some of the valid item names specified like described in the **Item Names** section.

**=TERMINATE(channel)**

Closes the channel at the end of the macro. Some applications have a limited number of channels. Therefore they should be closed when finished. **Channel** is the channel number returned by the previously executed **INITIATE** function.

**=RETURN()**

Marks the end of the macro.

The following is an example of Excel macro used to poke value from cell B2 to topic **Node1** item **MW100**:

```
PokeMacro -Ctrl a
=INITIATE("FESTOIPC","Node1")
=POKE(A2,"MW100",B2)
=ON.TIME(NOW()+0.01,"TerminateDDEChannel")
=RETURN()
```

```
TerminateDDEChannel
=TERMINATE(A2)
=RETURN()
```

**Note:** Refer to the Microsoft Excel manual for complete details on entering Remote Reference formulas for cells.

## Using the FESTO IPC Server with OPC Clients

The “OPC & DDE” version of FESTO IPC Server is accessible from OPC Clients (e.g., Wonderware OPCLink I/O Server) and DDE clients (e.g., Excel).

There are following general steps needed to access an OPC item from FESTO IPC Server:

1. Run OPC Client application and select the “FESTOIPC OPC and DDE Server” from the list of available OPC Servers. If FESTO IPC Server currently is not running, it will start automatically.
2. Create a new group (or topic if Wonderware OPCLink application is used).
3. If OPC Client supports the validating of items, validate the item before adding it.
4. Add the item. Depending on OPC Client it can be done in several different ways, for example:
  - a) By entering separately the access path to topic name (valid topic name configured in FESTOIPC Topic definition) and separately the item name.
  - b) By entering the full path to item name in the format **TopicName.ItemName** where **TopicName** is the valid topic name configured in FESTOIPC Topic definition.
  - c) By browsing the server address space.

By default the FESTO IPC Server is installed and used as a local OPC Server -- both OPC Server and OPC Client reside on same computer. The FESTO IPC Server can run also as a remote OPC Server – in this case OPC Server and OPC Client are located on separate computers. Accessing the remote OPC Server is same as for local OPC Server, but some DCOM (Distributed COM) configuration is required before accessing the remote OPC Server. The DCOM configuration must be done both on OPC Server and OPC Client computers.

### Configuring DCOM

To access FESTO IPC Server as a remote OPC Server, it is necessary to install FESTO IPC Server on both (OPC Server and OPC Client) computers. Also the DCOM must be configured on both computers.

After Server installation the System Administrator must configure DCOM by **Dcomcnfg.exe** (or Dcomcnfg32.exe for Win9x) system tool. This utility is located in the Windows system directory – e.g. in \WinNT\system32\ or \Win9x\system\.

Below is a simple example how to configure DCOM on NT Workstations for OPC Server computer (computer name *JohnB*) and on OPC Client computer (computer name *SteveL*).

Action	Remote OPC Server Computer name – <i>JohnB</i>	OPC Client Computer name – <i>SteveL</i>
Install the OPC Server.	✓	✓
Run Dcomcnfg.exe	✓	✓
Invoke <b>Default Properties</b> and set <b>Default Authentication Level</b> to ( <i>None</i> ), <b>Default Impersonation Level</b> to <i>Impersonate</i> .	✓	✓
Select OPC Server from <b>Applications</b> list and click on the <b>Properties...</b> button. Click on the <b>Location</b> tab, uncheck <b>Run application on this computer</b> , check <b>Run application on the following computer</b> and browse the remote computer <i>JohnB</i> .		✓
Edit <b>Security</b> settings: 1) set the following <b>custom access permissions</b> : NETWORK, SYSTEM, <i>SteveL</i> ; 2) set the following <b>custom launch permissions</b> : INTERACTIVE, SYSTEM, NETWORK, <i>SteveL</i> ; 3) be sure the <b>Default Configuration Permissions</b> contain SYSTEM.	✓	
Click on the <b>Identity</b> tab and select <b>The interactive user</b> .	✓	

Before starting a remote OPC Server, be sure the OPC Server computer and OPC Client computer can access each other on the network. The “Remote Procedure Call” Service should be started on OPC Server computer.

Now remote OPC Server is accessible for OPC Client on computer *SteveL*. To allow the access to more OPC Clients, configure DCOM on each OPC Client computer. The following table contains most frequent errors when configuring DCOM.

Error message	Possible reason
DCOM not installed	DCOM has not been installed
Server execution failed	<ol style="list-style-type: none"> <li>1) OPC Server can not be started</li> <li>2) <b>Identity</b> for OPC server not properly configured</li> <li>3) OPC Server is not located on a local hard disk</li> <li>4) OPC Server path in registry is too long or uses LFN (Long File Names)</li> <li>5) DCOMCNFG <b>Location</b> is not set to <b>Run on this computer</b>.</li> </ol>
Class not registered	OPC Server has not been registered
RPC server is unavailable	<ol style="list-style-type: none"> <li>1) <b>Remote Procedure Call</b> service is not running on the OPC Server computer</li> <li>2) Invalid computer name for remote OPC Server</li> <li>3) Make sure TCP/IP is installed properly</li> </ol>
Interface not supported	<ol style="list-style-type: none"> <li>1) Permission not granted to OPC Client</li> <li>2) Guest account disabled</li> </ol>
Access is denied	<ol style="list-style-type: none"> <li>1) DCOM security not configured properly</li> <li>2) OPC Server application not located on local hard disk</li> <li>3) SYSTEM account in DCOMCNFG must have <b>Access, Launch and Configure</b> privileges</li> </ol>
Error 80070776	Network error -- TCP/IP has not been configured properly
Catastrophic failure	<ol style="list-style-type: none"> <li>1) Trying to access an object before it is created</li> <li>2) Unhandled exception is occurs on the OPC Server</li> </ol>
Not enough storage	SYSTEM account in DCOMCNFG must have <b>Access, Launch and Configure</b> privileges

## Running FESTO IPC “OPC & DDE” version as Windows NT Service

To **install** FESTO IPC Server “OPC & DDE” version to run as Windows NT Service, the FESTO IPC Server must be started with command line parameter `"/Service"`:

### FESTOIPC /Service

After this the “FESTOIPC OPC & DDE Server” NT Service will be installed with Startup type “Manual”. The Service Startup configuration can be changed by MS Windows NT *Control Panel/Services* configuration dialogue boxes. The **Allow Service to Interact with Desktop** checkbox in “Service” dialogue box must be checked (the “Service” dialogue box can be invoked by pressing the “Startup” button on “Services” dialogue box when Service **FESTOIPC OPC & DDE Server** is selected). If **Allow Service to Interact with Desktop** is not selected then FESTOIPC Server full functionality is not ensured (e.g. the Server configuration can not be changed, no message boxes will be displayed, etc.).

To use FESTO IPC Server “OPC & DDE” version as Windows NT Service you may need to configure DCOM. For details of configuring DCOM refer to **Configuring DCOM** section of this manual. If “FESTOIPC OPC & DDE Server” NT Service will be accessed only from

local OPC clients (i.e. FESTO IPC Server will not be used as a remote OPC Server), then **custom access** and **launch permissions** "NETWORK" are not needed.

To **uninstall** "FESTOIPC OPC & DDE Server" NT Service, at first the Service must be stopped by *Control Panel/Services/Stop* and then FESTOIPC Server must be started manually with command line parameter `"/DelService"`:

### **FESTOIPC /DelService**

After this the FESTOIPC Server "OPC & DDE" version will be still registered and accessible to OPC clients.

## **Using the FESTOIPC with OPCLink Server**

The Wonderware OPCLink I/O Server (hereafter referred to as "OPCLink") is a Microsoft Windows application program that acts as a communication protocol converter and allows other Windows application programs access to data from local or remote OPC servers. OPCLink connects to OPC servers, converts client commands to OPC protocol and transfers data back to clients using DDE, FastDDE, or Suite Link protocols.

Please refer to *Wonderware OPCLink Server and OPC Browser User's Guide* for details how to install, start and use the OPCLink Server. The following information in this section covers only the most important points about using "OPC & DDE" version of FESTO IPC Server with OPCLink Server.

### **OPCLink Topic Definition**

The **Topic Definition** option from OPC Link Configure menu is used to create, modify, or delete OPCLink topic definitions. If OPC Link will communicate with FESTO IPC Server then there must be one or more topics defined for FESTO IPC Server. There are following important fields on the "OPCLink Topic Definition" dialogue box:

#### **Topic Name**

Enter a unique name (e.g. **IPC1**) for the IPC in this field. If using InTouch then same Topic Name is to be entered in the "Add Access Name" dialogue box when defining the Access Names for OPCLink Server in InTouch WindowMaker.

#### **OPC Server Name**

Select the name of the OPC server (**FESTOIPC.OPC\_Server**) that will be used by this topic. The list box shows the registered OPC servers in the system.

#### **OPC Path**

Enter the name of the OPC path (e.g. **FESTOIPC02.**) used by this topic. This OPC path is the first part of a full OPC item name string common to all items that will be used in this topic. The available OPC paths for FESTO IPC Server can be obtained by clicking on **Browse** button (this allows to view the FESTO IPC Server's exposed address space).

### **Update Interval**

Enter the frequency (in milliseconds) that the server will acquire data for the items/points associated with this topic. If 0 (zero) is entered here, OPCLink will not gather data from FESTOIPC Server.

### **Browse**

Clicking on this button initiates the browsing through exposed address space of FESTO IPC Server. The starting addresses of each available operand area and names of pre-defined (additional) items will appear on "Browse OPC items:" window in alphabetical order.

### **Accessing FESTOIPC Items via the OPCLink Server**

The communication protocol addresses an element of data in a conversation that uses a three-part naming convention that includes the *application name*, *topic name* and *item name*. The following briefly describes each portion of this naming convention:

#### ***application name***

The name of the Windows program (server) that will be accessing the data element. In the case of data coming from or going to FESTO IPC Server "OPC & DDE" version, the application portion of the address is **OPCLINK**.

#### ***topic name***

Meaningful names are configured to identify specific devices. These names are then used as the topic name in all conversations to that device. This must be same name as **Topic Name** entered in the "OPCLink Topic Definition" dialogue box, for example, **IPC1**. **Note.** You can define multiple topic names for the same IPC to poll different points at different rates.

#### ***item name***

A specific data element within the specified topic. The OPCLink Server item syntax follows the following rules. The item names must start with:

- d** – discrete value
- i** – integer value
- m** – message (string)

The item name that added to the OPC path of the topic (without the heading type letter) must give a fully qualified OPC item name for the FESTOIPC Server. Some examples of possible item names acceptable by OPCLink Server/ FESTOIPC Server connection:

- iMW200** – integer, Flag word 200
- dE0.1** – discrete, bit 1 in Input word 0
- mmw10:50** - message (string), concatenated 50 Flag words starting from Flag word 10

# Troubleshooting

## WIN.INI entries

The first time you run the FESTO IPC Server configuration, most of the items in the following list will automatically appear in the WIN.INI file. It is usually in the MS Windows system directory (e.g. C:\WINNT). It is an ASCII file and can be altered manually if you wish with any text editor, for example MS Notepad (*Do not use a program that formats text, such as MS Word or Write unless the file is saved as DOS text*). The following is a typical entry for the FESTO IPC Server:

```
[FESTOIPC]
ProtocolTimer=10
ConfigurationFile=C:\FESTOIPC\
WinIconic=0
WinFullScreen=0
WinTop=110
WinLeft=0
WinWidth=200
WinHeight=170
DumpScreen=1
SlowPollRetries =3
SlowPollInterval=120
WriteRetryIndefinitely=0
```

The **SlowPollRetries** entry is used to enter the number of consecutive error retries for one topic. If after **SlowPollRetries** there is still no successful response from IPC, then this topic is changed to *slow poll mode*. The WIN.INI file **SlowPollInterval** entry is used to enter the slow poll mode update interval (in seconds).

Entering into slow poll mode is reported to WWLogger and (or) to FESTO IPC Internal Logger by following string:

**"Entering slow poll mode on topic <TOPICNAME>, port <PORTNAME>."**

Leaving the slow poll mode is reported to WWLogger and (or) to FESTO IPC Internal Logger by following string:

**"Leaving slow poll mode on topic <TOPICNAME>, port <PORTNAME>."**

The default values (they are used if WIN.INI file does not contain these entries) are **SlowPollRetries** equal to 5 and **SlowPollInterval** equal to 60 seconds.

## Troubleshooting menu

The following debugging choices are appended to the Server's System Menu (the menu that appears when you click on the Server icon in the upper left hand corner of the Server's window):

- Suspend Protocol/Resume Protocol** - these choices permit you to turn protocol processing on and off, what means that you can suspend access to IPCs.
- Show Send** - if checked then all outgoing data is displayed in hexadecimal format.
- Show Receive** - if checked then all incoming data is displayed in hexadecimal format.
- Show Errors** - if checked then all information about errors is displayed.
- Show Rejected Writes** - if checked then information about rejected write messages is logged.
- Show Logger** - if checked then FESTO IPC Internal Logger is activated and all debug information is going to FESTO IPC Internal Logger. The FESTO IPC Internal Logger file is named as: **FESTOIPC\_YYYYMMDD.LOGn**, where **YYYY** is a year, **MM** -- month, **DD** -- day and **n** -- order number of consecutive FESTO IPC Internal Logger file, starting from 1. The maximum size of FESTO IPC Internal Logger file is 16 MB; if there is more information logged then next consecutive file is created, e.g. there can be consecutive files **FESTOIPC\_FESTOIPC\_19991013.LOG1**, **FESTOIPC\_19991013.LOG2**, etc.
- Dump** - displays all information about opened ports, active topics and data items.
- Dump Screen** - if checked then information about active read messages are displayed on the Server main window. Can be used for debugging purposes.

All debugs (except **DumpScreen**) are displayed by the Wonderware Logger or (and) FESTO IPC Internal Logger if **Show Logger** checked, which must be active for these commands to work.

**Note.** If you check **Show Send** and/or **Show Receive** then debug output grows very fast.

KLINKMANN AUTOMATION  
FESTO IPC Communication Server  
Revision History

Nov 1999	Rev 1.0	Release 1.0.
Jan 2001	Rev 1.1	OPC compliance information added.
Mar 2002	Rev 1.2	Installation from CD information added.