

OMRON Host Link Communication Server

for Microsoft Windows
and InTouch Applications

**User Manual
Ver 1.x Rev 1.1
DR 480 10
DR 480 11**

**KLINKMANN OY
P.O. Box 38
FIN-00371 Helsinki Finland
tel. int. + 358 9 5404940
fax int. + 358 9 5413541
www.klinkmann.com**

Table Of Contents

Overview	1
Communication Protocols	1
Accessing Remote Items via the Server	3
Installing the OMRHLINK Server	3
Installing the Server	3
Licensing by using HASP HL key	7
Software license key	7
Transferring the software license to other computer	8
Installing the I/O Server Infrastructure	10
Configuring the OMRHLINK Server	10
Server Settings Command	11
Com Port Settings Command	13
Saving OMRHLINK Configuration File	14
Configuration File Location	14
Topic Definition Command	14
Item Names	17
CS1/CJ1/CJ2 PLCs	21
CV-series PLCs	23
C200HX/C200HG/C200HE PLCs and SYSMAC Board	27
C/CPM2x PLCs	29
CQM1 PLCs	32
Monitoring and Controlling Communication with a PLC	33
Using the OMRHLINK Server with OPC Clients	36
Configuring DCOM	36
Running OMRHLINK "OPC & DDE" version as Windows NT Service	38
Using OMRHLINK with OPCLink Server	39
OPCLink Topic Definition	39
Accessing OMRHLINK Items via the OPCLink Server	40
Using the OMRHLINK Server with Suite Link and DDE Clients	41
Using the OMRHLINK Server with InTouch	41
Defining the Access Names	41
Defining the Tag names	43
Monitoring the Status of Communication with InTouch	45
Notes on Using Microsoft Excel	45
Reading Values into Excel Spreadsheets	45
Writing Values to OMRHLINK Points	45
Notes on Improving Server Performance	47
Troubleshooting	48
WIN.INI entries	48
Troubleshooting menu	49
Internal Logger	51

OMRON Host Link Communication Server

Overview

The Klinkmann **OMRON Host Link Communication Server** (hereafter referred to as the "OMRHLINK Server" or "OMRHLINK" or "Server") is a Microsoft Windows 32-bit application program that acts as a communications protocol *Server* and allows other Windows application programs access to data from OMRON PLCs (also referred to as controllers or devices) using the Host Link protocol. The OMRON Host Link I/O Server communicates with OMRON CS1-series, CJ1-series, CJ2-series, CV-Series, C-Series, CPM2x, 200HX/C200HG/C200HE and CQM1 controllers via serial RS-232/RS-422/RS-485 interface. The *Server* may be used by any Microsoft Windows program that is capable of acting as a **DDE**, **FastDDE**, **SuiteLink** or **OPC Client**.

There are two different OMRHLINK Server versions described in this manual:

- Server version (ordering number DR 480 10), supporting SuiteLink, FastDDE and DDE protocols; this version hereafter is referred to as the "**Suite Link & DDE**" version.
- Server version (ordering number DR 480 11), supporting OPC and DDE protocols; this version hereafter is referred to as the "**OPC & DDE**" version;

The separate installation package is supplied for each version of the Server. In all cases the name of Server executable file is **OMRHLINK.EXE**. All further information in this manual is same for all versions of the Server, with the exception of few points where communication protocol specific features are explained.

Communication Protocols

Dynamic Data Exchange (DDE) is a communication protocol developed by Microsoft to allow applications in the Windows environment to send/receive data and instructions to/from each other. It implements a client-server relationship between two concurrently running applications. The server application provides the data and accepts requests from any other application interested in its data. Requesting applications are called clients. Some applications such as Wonderware InTouch and Microsoft Excel can simultaneously be both a client and a server.

FastDDE provides a means of packing many proprietary Wonderware DDE messages into a single Microsoft DDE message. This packing improves efficiency and performance by reducing the total number of DDE transactions required between a client and a server. Although Wonderware's FastDDE has extended the usefulness of DDE, this extension is being pushed to its performance constraints in distributed environments.

The OMRHLINK Communication Server supports the FastDDE Version 3 - an extension to Wonderware's proprietary FastDDE Version 2. This extension supports the transfer of Value Time Quality (VTQ) information. The original DDE and FastDDE Version 2 formats are still supported, providing full backward compatibility with older DDE clients. FastDDE Version 3 works on Windows 9x systems as well as Windows NT systems.

NetDDE extends the standard Windows DDE functionality to include communication over local area networks and through serial ports. Network extensions are available to allow DDE links between applications running on different computers connected via networks or modems. For example, NetDDE supports DDE between applications running on IBM compatible computers connected via LAN or modem and DDE-aware applications running on non-PC based platforms under operating environments such as VMS and UNIX.

SuiteLink uses a TCP/IP based protocol and is designed by Wonderware specifically to meet industrial needs such as data integrity, high-throughput, and easier diagnostics. This protocol standard is only supported on Microsoft Windows NT 4.0 or higher. SuiteLink is not a replacement for DDE, FastDDE, or NetDDE. The protocol used between a client and a server depends on your network connections and configurations. SuiteLink was designed to be the industrial data network distribution standard and provides the following features:

- Value Time Quality (VTQ) places a time stamp and quality indicator on all data values delivered to VTQ-aware clients.
- Extensive diagnostics of the data throughput, server loading, computer resource consumption, and network transport are made accessible through the Microsoft Windows NT operating system Performance Monitor. This feature is critical for the scheme and maintenance of distributed industrial networks.
- Consistent high data volumes can be maintained between applications regardless if the applications are on a single node or distributed over a large node count.
- The network transport protocol is TCP/IP using Microsoft's standard WinSock interface.

OPC (OLE for Process Control) is an open interface standard to provide data from a data source and communicate the data to any client application in a common standard way. The OPC is based on Microsoft OLE, COM and DCOM technologies and enables simple and standardized data interchange between the industrial or office sector and the production sector. From general point of view many aspects of OPC are similar to DDE, but main difference is in the implementation by using Microsoft's COM (Component Object Model) technology. It enables fast exchange with process automation data and OPC open interface allows access to data from OPC Server in same standard way from OPC client applications supplied by different developers.

For more information on the basics of OPC, please refer to the **OPC Specification**. The OPC Data Access Custom Interface Specification is maintained by **OPC Foundation**, the current specification is 2.04 dated September 2000.

The OPC support for OMRHLINK Server "OPC & DDE" version is implemented based on **FactorySoft OPC Server Development Toolkit** and it conforms to OPC Data Access Custom Interface Specification 2.05. The OMRHLINK Server "OPC & DDE" version is tested for compliance and is compatible with OPC Foundation OPC Data Access Compliance Test Tool.

The Suite Link, FastDDE (Version 3) and DDE support for OMRHLINK Server "Suite Link & DDE" version is implemented by **Wonderware I/O Server Toolkit** ver. 7.2.1.6).

The FastDDE (Version 2) and DDE support for OMRHLINK Server "OPC & DDE" version is implemented by *Wonderware I/O Server Toolkit* ver. 5.0 (008).

Accessing Remote Items via the Server

The communication protocol addresses an element of data in a conversation that uses a three-part naming convention that includes the *application name*, *topic name* and *item name*. The following briefly describes each portion of this naming convention:

application name

The name of the Windows program (server) that will be accessing the data element. In the case of data coming from or going to OMRON Controllers via this Server, the application portion of the address is **OMRHLINK**.

topic name

Meaningful names are configured in the Server to identify specific devices. These names are then used as the topic name in all conversations to that device. For example, **PLCT1**. **Note!** You can define multiple topic names for the same device (PLC) to poll different items at different rates.

item name

A specific data element within the specified topic. When using the OMRHLINK Server, an item can be a relay, timer, counter, register, etc., in the PLC. The term "point" is used interchangeably with the term "item" in this User Manual. For more information on item/point names, see the *Item Names* section later in this manual.

Installing the OMRHLINK Server

Installing the Server

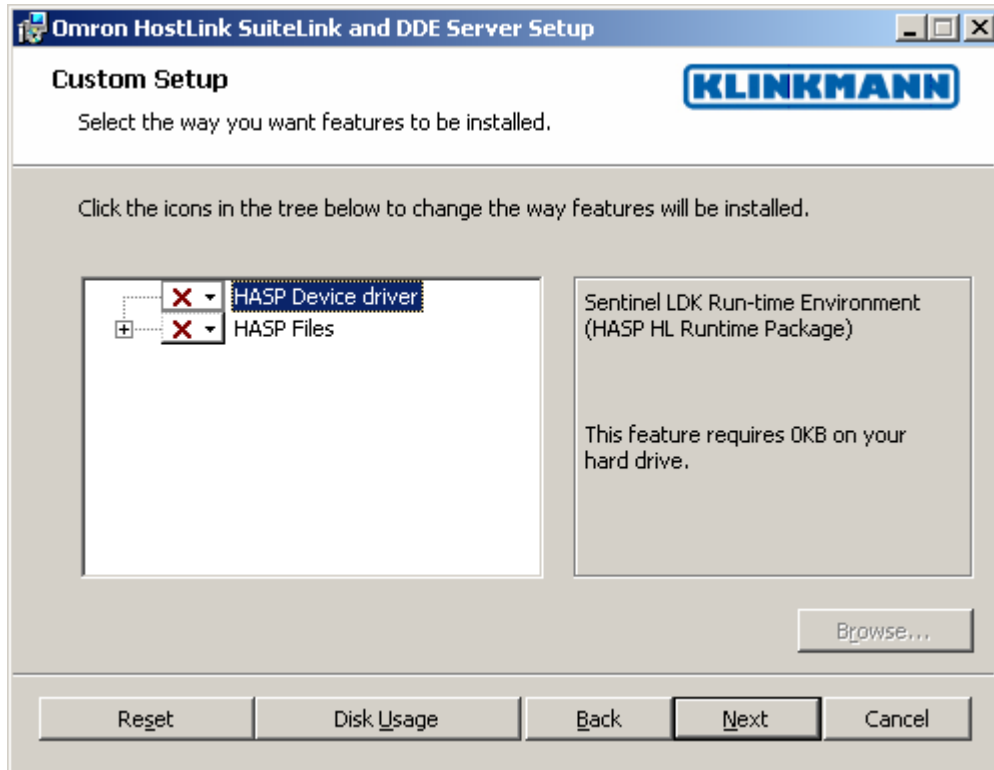
The OMRHLINK Server installation package is supplied as a Microsoft Installer file DR48010_xxx.msi (for "Suite Link & DDE" version) or DR48011_xxx.msi (for "OPC & DDE" version), where xxx is the current (latest) version of OMRHLINK Server.

To install the OMRHLINK Server, run the DR48010_xxx.msi (for "Suite Link & DDE" version) or DR48011_xxx.msi (for "OPC & DDE" version) and proceed as directed by the OMRHLINK Server Setup Wizard. The installation is simple and straightforward, only it is important to select the correct protection (**HASP key** or **software license**) in "Custom Setup" dialog:

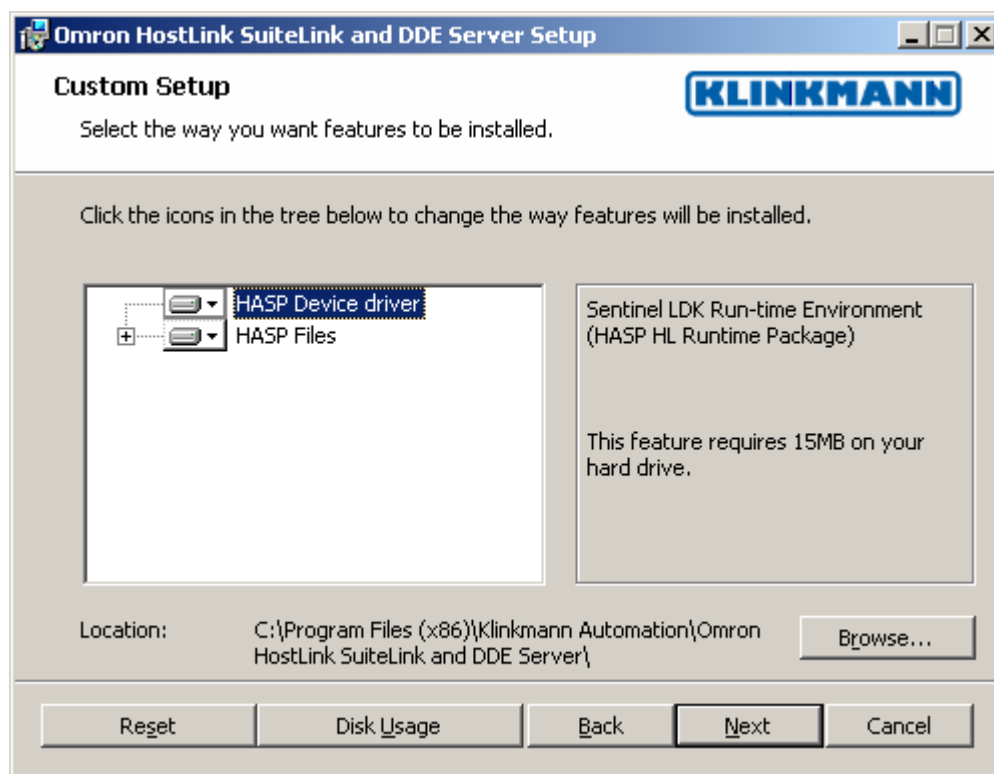
The HASP key or software license key is needed for full time running of OMRHLINK Server. The **HASP key** is an USB key (dongle) to be installed into PC USB port and needs the SafeNet Sentinel LDK Run-time Environment (HASP HL Runtime Package) to be installed and running – see details in "Licensing by using HASP HL key" section below. The **software license key** is a 16-character alphanumeric "computer-dependent" string, provided after purchasing the OMRHLINK Server (for more information, see "Software license key" section below. Without HASP key installed or software license key entered, the OMRHLINK Server will run one hour in demo mode. After purchasing the

OMRHLINK Server, the appropriate HASP key or software license key is provided and no re-installation of OMRHLINK Server is needed.

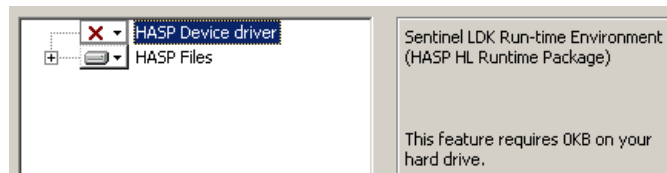
In case “HASP Device driver” and “HASP Files” **are not selected** then HASP USB key will not be supported and only the **software license** will be available (files needed for HASP USB key will not be installed):



In case “HASP Device driver” and “HASP Files” **are selected** then HASP USB key will be supported and both HASP-key and software license will be available (files needed for HASP USB key will be installed):



Note: In case the SafeNet Sentinel LDK Run-time Environment (HASP HL Runtime Package) is already installed on your computer (separately or by some other software) then it can be disabled:



When installation is finished, the subdirectory specified as a folder where to install the OMRHLINK Server files will contain the following files:

- | | |
|----------------------------|--|
| OMRHLINK.EXE | The OMRHLINK Server Program. This is a Microsoft Windows 32-bit application program. |
| OMRHLINK.CHM | The OMRHLINK Server Help file. |
| OMRHLINK.CFG | An example configuration file. |
| hasp_windows_44.dll | Dynamic Link Library installed only if "HASP Files" is selected during the installation in "Custom Setup" dialog. |
| haspdinst.exe | Sentinel LDK Run-time Environment Installer (HASP HL Runtime Package), copied to OMRHLINK Server folder only if "HASP Device driver" is selected during the installation in "Custom Setup" dialog. |
| LICENSE.RTF | Klinkmann software license file. |

- KLSERVER.DLL** Dynamic Link Library necessary for “OPC & DDE” version of the Server.
- WWDLG32.DLL** Dynamic Link Library necessary only for “OPC & DDE” version Of the Server.

In case the “HASP Device driver” is selected during the installation in “Custom Setup” dialog, the Sentinel LDK Run-time Environment (HASP HL Runtime Package) is installed during the OMRHLINK Server installation (and will be uninstalled during the OMRHLINK Server uninstallation). The presence of Sentinel LDK Run-time Environment can be checked after the OMRHLINK Server installation by looking-up in Control Panel / Administrative Tools Services – the Service “Sentinel Local License Manager” must be started.

Notes:

1. The OMRHLINK Server “Suite Link & DDE” version is developed with Wonderware I/O Server Toolkit (ver 7,2,1,6) and needs the **Wonderware ArcestrA Components** (formerly Wonderware FS 2000 Common Components) to be installed on computer where the OMRHLINK Server is running. The Wonderware ArcestrA Components are installed automatically when any of Wonderware product (e.g. InTouch or some Wonderware Operations Integration Server or DAServer) is installed.
2. If OMRHLINK Server “Suite Link & DDE” version will run on PC where Wonderware ArcestrA Components are not installed then a special **I/O Server Infrastructure installation package** can be obtained from Klinkmann (see **Installing the I/O Server Infrastructure** section below). This I/O Server Infrastructure installation package contains the minimum set of software needed to run the OMRHLINK Server and these infrastructure files must be install prior to executing the OMRHLINK Server. The **I/O Server Infrastructure** does not support using OMRHLINK Server as a Windows Service and remote access to OMRHLINK Server (when DDE/SuiteLink Client is not located on same computer as OMRHLINK Server).

To **uninstall** the OMRHLINK Server, start Control Panel, select “Uninstall a program” and select the “Omron HostLink SuiteLink and DDE Server” or “Omron HostLink OPC and DDE Server” from the list of available software products. Click on “Uninstall” and proceed as directed by the Uninstall Wizard.

Licensing by using HASP HL key

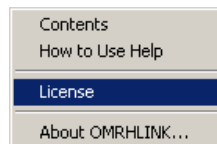
The following should be done to enable the licensing by HASP HL key:

- The “HASP Device driver” and “HASP Files” are selected during the OMRHLINK Server installation in “Custom Setup” dialog – that causes correspondingly haspdinst.exe and hasp_windows_4442.dll files are copied to OMRHLINK Server folder and Sentinel LDK Run-time Environment (HASP HL Runtime Package) is installed and started, enabling the OMRHLINK Server can detect the HASP HL USB dongle;
- insert the received HASP key into USB port, and **wait** until “Installing device driver software” message disappears and “Device driver software installed successfully” message appears;
- start OMRHLINK Server and check - if “Software key or HASP HL key not found!” message does not appear then it means everything is done correctly and OMRHLINK Server runs in full mode with licensing by HASP HL key enabled.

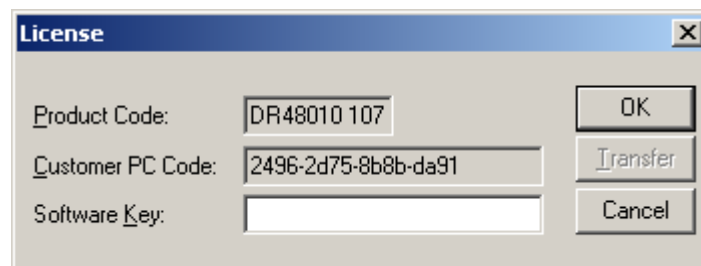
Software license key

OMRHLINK Server supports the “computer dependent” **software licensing**. The following steps are required to enable it:

1) Start OMRHLINK Server, click on "Help" menu item (also short-cut Alt+H can be used) and pop-up menu with "Help" menu commands will appear:

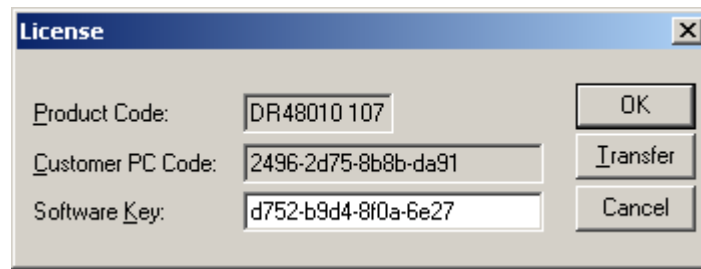


Select “License” and “License” dialog will appear:



2) Here the “Customer PC Code” is “computer-dependent” string generated by OMRHLINK Server and it is unique for this computer. Write it down or Copy/Paste to e-mail when ordering the OMRHLINK Server.

3) After purchasing the OMRHLINK Server, you will get the software license key - 16-character alphanumeric string. Open the “License” dialog again and Copy/Paste it to “Software Key” field:



4) Click OK and restart OMRHLINK Server. OMRHLINK Server software license now is enabled.

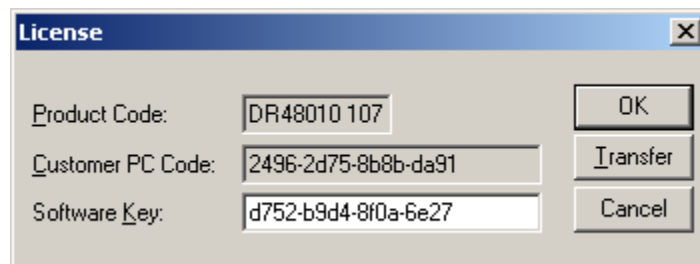
Note – the “Software Key” string is saved to MS Windows system directory (e.g. C:\Windows) WIN.INI file [OMRHLINK] section to enable it is automatically detected at OMRHLINK Server next start-up.

Transferring the software license to other computer

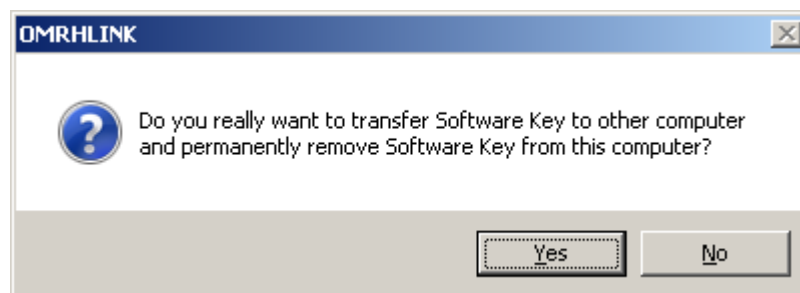
The transfer of Software License Key might be needed in very rare situations when it is necessary to move Klinkmann software to other computer (or operation system change is planned for same computer). Such transfer PERMANENTLY removes the Software License Key, so be very careful when deciding to use this option.

The following steps are required to transfer the Software License Key:

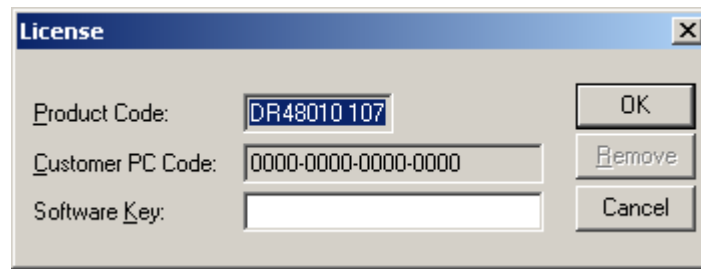
- 1) Start the OMRHLINK Server. For OMRHLINK Server “Suite Link & DDE” version, the ArchestrA SMC Log Viewer (or Wonderware Logger) must be started. For OMRHLINK Server “OPC & DDE” version, the OMRHLINK Internal Logger and “Log to File” should be enabled (see “Troubleshooting menu” and “Internal Logger” sections at the end of this manual). Select Help/License from main menu and click the “Transfer” button on “License” dialog:



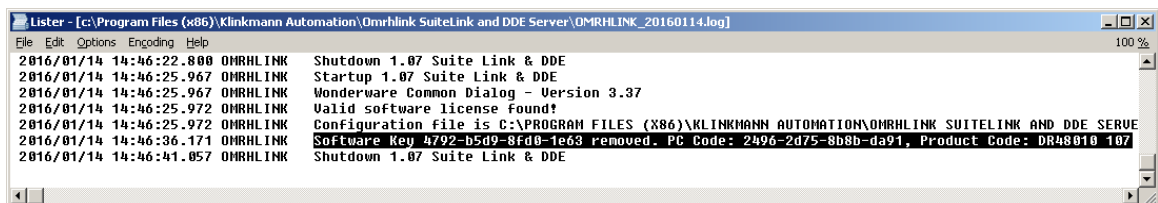
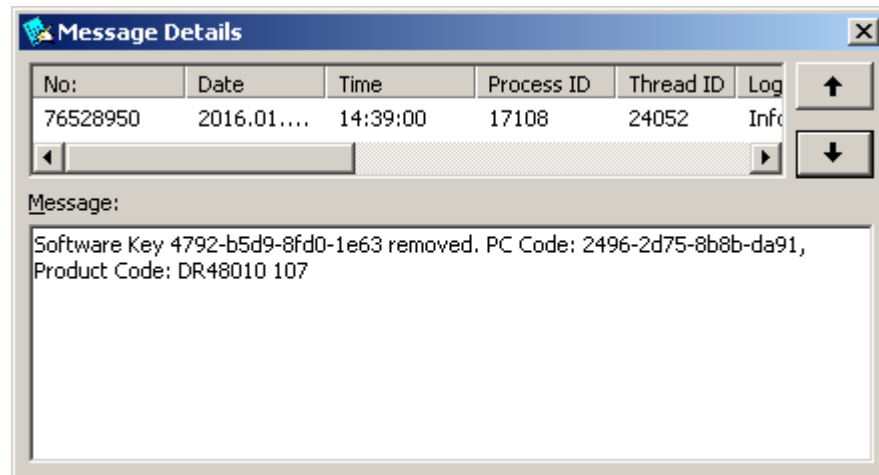
- 2) Confirm the transfer of Software License Key by clicking on Yes button:



The “License” dialog now will contain the empty “Customer PC Code” and “Software Key” fields:



- 3) Take the screenshot from Archestra SMC Logger or OMRHLINK Internal Log file window containing the “Software License Key removal message”, like below:



or take the string with “Software License Key removal message” directly from Archestra SMC Logger or OMRHLINK Internal Log file, like following:

Software Key 4792-b5d9-8fd0-1e63 removed. PC Code: 2496-2d75-8b8b-da91, Product Code: DR48010 107

- 4) Provide the obtained “Software License Key removal message” screenshot or string together with new “Customer PC Code” when applying for new Software License Key without purchasing the new license (in situations when it is necessary to move Klinkmann software to other computer or operation system change is planned).

Note!

Without providing the “Software License Key removal message” screenshot or string, the new Software License Key will not be assigned.

Installing the I/O Server Infrastructure

The I/O Server Infrastructure installation package is supplied as a self-extracting archive (IOServerInfrastructure.exe) and can be downloaded from Klinkmann's web site.

To **install** the I/O Server Infrastructure from the self-extracting archive, run the IOServerInfrastructure.exe and proceed as directed by the I/O Server Infrastructure Setup program.

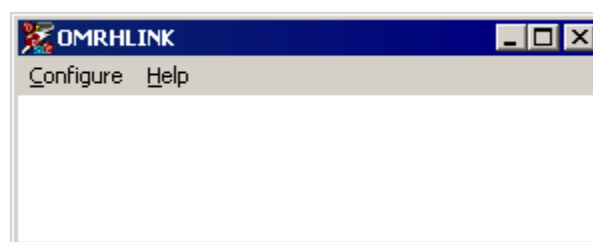
To **uninstall** the I/O Server Infrastructure, start Control Panel, select "Add/Remove Programs" and select the "IO Server Infrastructure" from the list of available software products. Click on "Add/Remove..." and proceed as directed by the UnInstallShield program.

Note: The I/O Server Infrastructure installation will be rejected if Arcestra Common Components (formerly Wonderware FS2000 Common Components) are already installed on same computer. The I/O Server Infrastructure does not support using OMRHLINK Server as a Windows Service and remote access to OMRHLINK Server (when DDE/SuiteLink Client is not located on same computer as OMRHLINK Server).

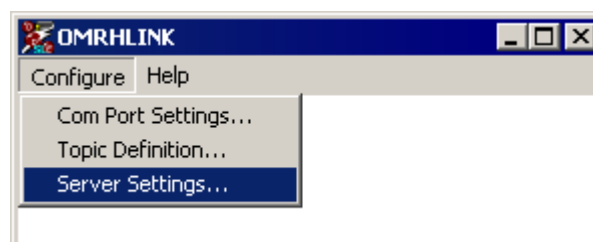
Configuring the OMRHLINK Server

After the OMRHLINK Server is initially installed, a little of configuration is required. Configuring the Server automatically creates an **OMRHLINK.CFG** file that holds all of the topics (controllers) definitions entered, as well as the communication port configurations. This file will be placed automatically in the same directory in which **OMRHLINK** is located unless the path where the configuration file will be placed is specified via the /Configure/Server Settings... command.

To perform the required configurations, start up the OMRHLINK program. If the Server starts up as an icon, double-click on the icon to open the server's window. The following will appear:



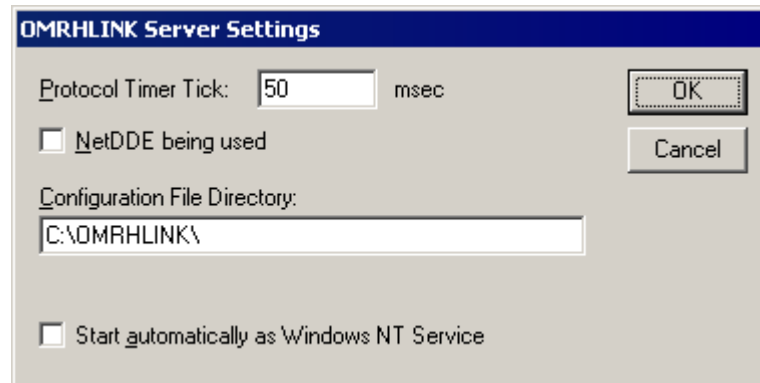
To access the commands used for the various configurations, open the /Configure menu:



Server Settings Command

A number of parameters that control the internal operation of the Server can be set. In most cases, the default settings for these parameters provide good performance and do not require changing. However, they can be changed to fine-tune the Server for a specific environment.

To change the Server's internal parameters, invoke the Configure/Server Settings... command. The "Server Settings" dialog box will appear:



The following describes each field in this dialog box:

Protocol Timer Tick

This field is used to change the frequency at which the Server checks for work to do (at this frequency the Server tries to send one data request to PLC and receive one reply from PLC. If the send/response cycle is too long then more than one activation of Server is necessary to process it. If computer is very busy or some other MS Windows application is taking over the computer then the Server is activated rarely than setting in the **Protocol Timer Tick**.

Note: The default value is 50 milliseconds. The minimum value is 10 milliseconds.

NetDDE being used

Select this option if you are networking using NetDDE.

Configuration File Directory

The first field is used to specify the path (disk drive and directory) in which OMRHLINK will save its current configuration file. OMRHLINK will use this path to load the configuration file the next time it is started.

Note: Only the "path" may be modified with this field. The configuration file is always named **OMRHLINK.CFG**.

Note: There is no limit to the number of configuration files created, although each must be in a separate directory. When using the OMRHLINK Server with **InTouch**, it is good practice to place the configuration file in the application directory.

Start automatically as Windows NT Service

Enabling this option will cause the server to start as a Windows NT service.

Windows NT offers the capability of running applications even when a user is not logged on to the system. This is valuable when systems must operate in an unattended mode. Enabling this option and rebooting the system will cause the Server to run as a Windows

NT service. However, to view configuration information or to reconfigure the Server, the user must log on to the system. Any Server related problems that may arise such as missing adapter cards, licensing failures or device drivers not loading will not be visible to the user until a log on is performed. Disabling this option and rebooting the system will cause the Server to run as a Windows NT application program once again.

Notes:

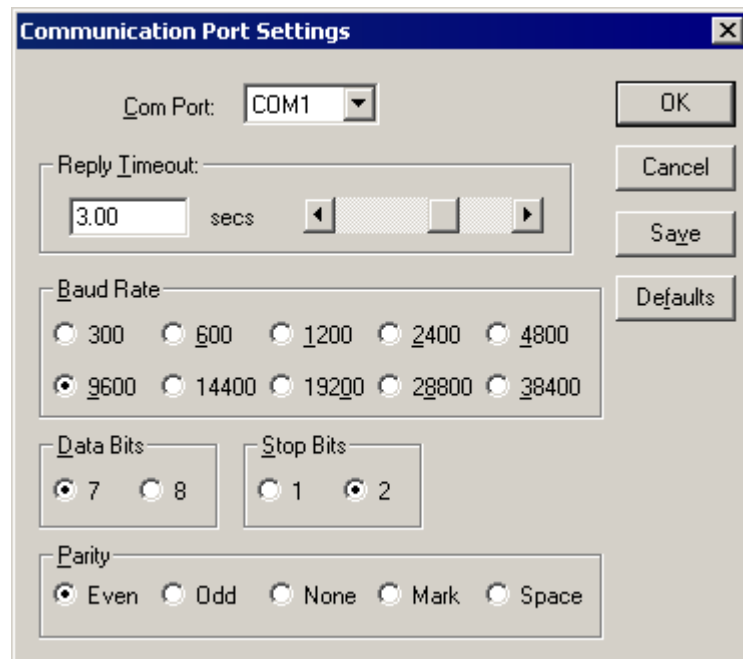
1. The **Start automatically as Windows NT Service** feature can be activated only with OMRHLINK Server "Suite Link & DDE" version. To start the OMRHLINK Server "OPC & DDE" version as Windows NT Service, refer to **Running OMRHLINK "OPC & DDE" version as Windows NT Service** section of this manual.

2. The Service Startup configuration can be changed by MS Windows NT **Control Panel/Services** configuration dialogs. The **Allow Service to Interact with Desktop** checkbox in "Service" dialog box must be checked (the "Service" dialog box can be invoked by pressing the "Startup" button on "Services" dialog box when Service **OMRHLINK_IOServer** is selected). If **Allow Service to Interact with Desktop** is not selected then OMRHLINK Server full functionality is not ensured (e.g. the Server configuration can not be changed, no message boxes will be displayed, etc.).

Once all entries have been made, click on **OK**.

Com Port Settings Command

This command is used to configure the communication ports that will be used to communicate with OMRON PLCs. Invoke the `/Configure/Com Port Settings...` command. The "Communication Port Settings" dialog box will appear.



Select the **Com Port** and examine the characteristics of the selected Port. To select a necessary Com Port, click on the combo box button and make your choice from the list box.

The **Reply Timeout** field is used to enter the amount of time (in seconds) the controller using the selected communication port will be given to reply to commands from the Server. The default value of **3** seconds should be sufficient for most configurations.

Select the **Baud Rate** that matches the setting chosen for the hardware. The default Baud Rate is **9600**.

Select the **Data Bits** value that matches the setting chosen for the hardware. The default Data Bits setting is **7**.

Select the **Stop Bits** value that matches the setting chosen for the hardware. The default Stop Bits setting is **2**.

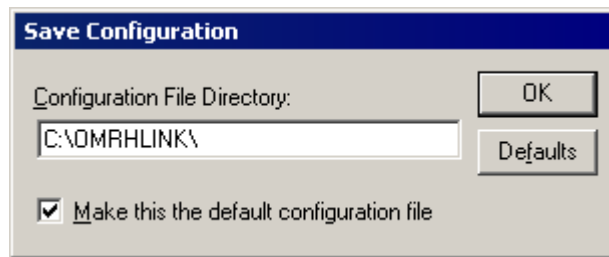
Select the **Parity** that matches the setting chosen for the hardware. The default Parity is **Even**.

The communication parameters entered here must match with Host Link communication settings of the OMRON controller.

Once communication parameters and Reply Timeout are entered, select **Save** to save the configuration for the communication port. Once all entries have been made, click on **OK**.

Saving OMRHLINK Configuration File

If the configuration file does not currently exist, or a new configuration path has been specified, the Server will display the "Save Configuration" dialog box:



This dialog box displays the path where the Server is going to save the current configuration file. The path may be changed if necessary. Also, the path can optionally be recorded in the **WIN.INI** file by selecting the "**Make this the default configuration file**" option. Doing so will allow the OMRHLINK Server to find the configuration file automatically each time it is started.

Configuration File Location

When the OMRHLINK Server starts up, it first attempts to locate its configuration file by, first checking the **WIN.INI** file for a path that was previously specified. If the path is not present in the **WIN.INI** file, the Server will assume that the current working directory is to be used.

To start the Server from an application directory configuration file other than the default configuration file a special switch (**/d:**) is used. For example, invoke the **File/Run** command and enter the following:

OMRHLINK /d:c:\directoryname

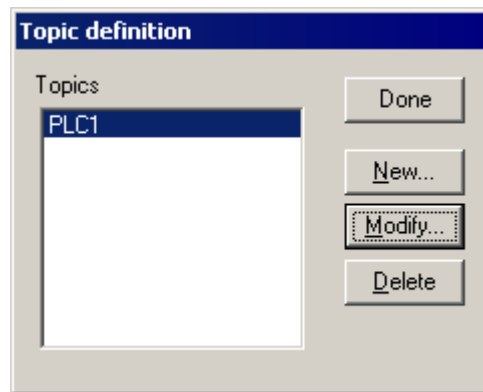
Note: There is no limit to the number of configuration files that may be created, although each must be in a separate directory.

Topic Definition Command

The user provides each device (controller) with an arbitrary name that is used as the Topic Name for all references to the device.

The following steps are taken to define the topics (controllers) connected to OMRHLINK Server. The connection can be **direct** (default) if communicating with controller via serial or multi-dropped serial configuration or **networked** if communicating with controller that is on some of OMRON FA (Factory Automation) networks (e.g. Ethernet or Controller Link):

1. Invoke the Configure/Topic Definition... command. The "Topic definition" dialog box will appear:



- To modify an existing topic, select the topic name and click on **Modify**. To define a new topic, click on **New**. The "OMRHLINK Topic Definition" dialog box will appear:

- Enter the **Topic Name**. If using **InTouch** the same Topic Name is to be entered in the "Add Access Name" dialog box described in the *Using the OMRHLINK Server with InTouch* section.
- Click on the **Com Port** button to associate a topic with the communication port. Additional topics may be associated with the same communication port later.
- Enter the Host Link unit address in **Unit Address** field. Valid addresses are 0...31. The default Unit Address is **0**.
- Set the **Update Interval** field to indicate the frequency the items/points on this topic will be read (polled). Default value is **1000** milliseconds.
- Select **Automatically Switch to Monitor Mode on Writes** if it is necessary to perform write operations to this PLC if PLC is in Run mode. If for safety reasons the monitoring only function is needed, do not select this feature. This selection is

available only for “C/CPM2/CPM2C”, “C200HX,C200HG,C200HE” and “CQM1” Device Types.

8. Select the **Device Type** associated with this Topic. The available Device Types are: “**CS1/CJ1**” (this selection supports also CJ2 PLCs), “**CV-Series**”, “**C/CPM2/CPM2C**”, “**C200HX,C200HG,C200HE**” and “**CQM1**”. For “CV-Series” and “C/CPM2/CPM2C” select the **CV/C Controller Type** by clicking on the combo box button and make selection from list box.
9. Select the **Communication Type**: “**Local**” (default) or “**Network**”. The “Local” selection is used if communicating with controller directly via serial or multi-dropped serial configuration. The “Network” selection is used if communicating with controller that is on some of OMRON FA (Factory Automation) networks (e.g. Ethernet or Controller Link).
10. If Communication Type “**Network**” is selected then enter the **Network Address** and **Node Number** of this networked PLC.
11. If necessary, enter the value of **FINS Response Maximum Size, words (CS1/CJ1 and CV only)** for *relevant data part* of read command. Values from 1 to 135 (default) are valid. The default value is recommended and reduce this value only if selected PLC has timing problems to process great amount of data in a short time period.

All Omron CS1,CJ1 and CV PLCs support the requests of maximum length, but not all PLC models can process a lot of such requests without communication errors. If PLC time by time reports an error message to valid read or write command then one of possible error reasons can be too many data requested by one read command. In such cases it is recommended to reduce the **FINS Response Maximum Size, words (CS1/CJ1 and CV only)** for the selected PLC.

Once all entries have been made, click on **OK**.

Item Names

The OMRHLINK Server supports item/point names that are consistent with the point naming convention used by OMRON PLCs. The OMRHLINK Server supports the fixed set of item names, the following describes both the valid data formats and Item Names for supported OMRON devices:

Each **Discrete**, **Integer** or **Real** (floating point) item name generally may be described as:

PnS

Each **ASCII string** (Message) item name generally may be described as:

Pn-hS

where:

n - Specifies the Memory area word/bit address of the specific word, flag or bit or lowest address of ASCII string.

The rightmost two digits of the **bit address** (when indicates a separate bit in word area) specify the bit number in word and the leftmost digits - specify the word address. Depending on the number of digits in the item name name (for bit in word leading zeroes must be in name if necessary) the Server recognizes, whether item/point represents a whole word or only a separate bit in word.

For compatibility with OMRON CX-Programmer addressing syntax and item/point naming used in some other Wonderware and Klinkmann I/O Servers, additionally also a character '.' (or ':') can be used as a separator between word address and bit address. In this case each item, representing bit in word, may be described as, **Pn.b** (or **Pn.bb** or **Pn:b** or **Pn:bb**) where **n** is a word address and **b (bb)** is a bit number in word (b can be 0...9 and bb can be 00...15). The number of digits in bit item name with separator is not relevant (leading zeroes are not necessary).

h - Specifies the highest address of ASCII string.

P - Item name used prefix: one, two or three characters before Memory area address, designating the type of Memory area.

S - Optionally used suffix (one character): for **Integer** and **Real** type items it specifies the special format of data (see below); for **ASCII string** items it specifies the high-order byte, low-order byte or both bytes of the words; not valid for **Discrete** type items.

Unsigned/Signed Format

The server interprets 16-bit words (channels) in a PLC in 16-bit unsigned format (value range from 0 to 65535) or signed format (value range from -32768 to 32767). Unsigned quantities may be read by one of two methods - by entering item name without suffix or appending the suffix '**U**' (or '**u**'). For example, the channel **DM100** in a PLC contains 8000 hex. In this case item name DM100 or DM100U would be displayed in InTouch or Excel as 32768. Signed quantities may be read from the same channel by appending the suffix '**S**' (or '**s**') to the item name. So, item name **DM100S** would be displayed in InTouch or Excel as -32768.

BCD Format

To read/write data using BCD format - append the suffix '**B**' (or '**b**') to the item name, e.g. **DM100B**.

Long Format (Signed/BCD)

Two consecutive 16-bit words in a PLC can be interpreted as a 32-bit long integer. It can be formatted as either signed (-2,147,483,648 to 2,147,483,648) or BCD (0 to 99,999,999). To read/write an item in signed long format - append the letter 'L' (or 'l') to the item name. To read/write an item in BCD long format - append the letter 'M' (or 'm') to the item name. For example, if DM100 contains 0234 hex and DM101 contains 1356 hex, **DM100L** returns 324,403,764 and **DM100M** returns 13,560,234.

Floating Point Format (IEEE/BCD)

Two consecutive 16-bit words in a PLC can be interpreted as a single precision floating point number. It is formatted as either IEEE (-3.402823 * 10³⁸ to 3.402823 * 10³⁸) or BCD (0.0000001 to 0.9999999 * 10⁷). To read/write an item in IEEE floating point format, append one of the following letters to the item name: 'F', 'f', 'R' or 'r'. To read/write an item in BCD floating point format - append the letter 'G' (or 'g') to the item name. For example, if D100 contains 9620 hex and D101 contains 2436 hex in a CV500 PLC, **D100F** returns 3.959212 * 10⁻¹⁷ and **D100G** returns 0.4369620 * 10².

Floating point format is relevant only with items, indicating memory areas word contents.

ASCII Strings Format

Multiple consecutive 16-bit words (block size of 1 to 29) in a PLC can be interpreted as a string of ASCII characters. The ASCII string is stored/retrieved from the lowest-numbered address to the highest and from the high-order byte to the low-order byte with each address. To define a range of words, use a '-' between the two address locations. For example, DM10-DM12 indicates locations from DM10 to DM12. ASCII string characters can be specified to come from the high-order byte, low-order byte, or both bytes of the words.

Low-order Byte	Only the low-order byte (LSB - least significant 8-bits) of each word is used for read. To use this format, append the suffix 'E' to the item name.
High-order Byte	Only the high-order byte (MSB - most significant 8-bits) of each word is used for read. To use this format, append the suffix 'D' to the item name.
Both Bytes	Both bytes of each word are used for read/write. To use this format, append the suffix 'C' to the item name.

Note: All bytes in the specified memory range will be used. If the string is shorter than the range of memory specified, it will be padded with '\0'. If the string is longer than the range of memory specified, the string will be truncated.

For example, assume the following memory contents (numeric values shown in hex):

	MSB	LSB	
DM10	41	42	"AB"
DM11	43	44	"CD"
DM12	45	46	"EF"

Read:

DM10 - DM12C Returns ABCDEF
 DM10 - DM11D returns AC
 DM10 - DM12E returns BDF

Write:

DM10 - DM12C after written with "ABCD"

	MSB	LSB	
DM10	54	65	"AB"
DM11	73	74	"CD"
DM12	0	0	" "

DM10 - DM12E after written with "ABCDE"

	MSB	LSB	
DM10	0	41	"A"
DM11	0	42	"B"
DM12	0	43	"C"

Notes:

1. Do not operate with item names, which have addresses outside really existing PLC data and memory area! It will lead to communication failures, because the Server recognizes item name error only if item name goes out of range represented in the item names table. Usually the information like following will be logged to WWLogger and (or) to OMRHLINK Internal Logger if some item with address in inaccessible memory area is used:

For **CS1/CJ1** and **CV-Series** PLCs:

"Error Response received - MRC:11 SRC:01 - wrong memory area code used or expanded memory not available"

or

"Error Response received - MRC:11 SRC:03 - the first address is in an inaccessible area"

For **C/CPM2/CPM2C, C200HX,C200HG,C200HE** and **CQM1** PLCs:

"Error Response received: end code:15 - the area for read is wrong"

2. Do not write to PLC data and memory areas where write is not allowed! In this case write command will be rejected and information like following will be logged to WWLogger and (or) to OMRHLINK Internal Logger:

For **CS1/CJ1/CJ2** and **CV-Series** PLCs:

"Error Response received - MRC:21 SRC:01 - write not possible when accessing item <item name>"

For **C/CPM2/CPM2C, C200HX,C200HG,C200HE** and **CQM1** PLCs:

“Error Response received: end code:15 -the area for write is wrong when accessing item <item name>”

Compatibility with Wonderware Omron Host Link I/O Server

The item/point naming system used in Klinkmann **OMRHLINK** Communication Server is compatible with item/point naming system used in **Wonderware Omron Host Link I/O Server (OMRONHL)**. In general, the item/point naming compatibility is following:

- the Klinkmann OMRHLINK Communication Server “**CS1/CJ1**” and “**CV-Series**” PLC types are compatible with Wonderware Omron Host Link I/O Server “**CV500**”, “**CV1000 and CV2000**” and “**CVM**” PLC types;
- the Klinkmann OMRHLINK Communication Server “**C/CPM2/CPM2C**”, “**C200HX,C200HG,C200HE**” and “**CQM1**” PLC types are compatible with Wonderware Omron Host Link I/O Server “**C-Series**” PLC types.

The only difference is in addressing of discrete bits in C-Series PLCs for the DM area:

- in Wonderware Omron Host Link I/O Server for C-Series PLCs only **three** digit numbers can be used to specify the channel (word address), e.g. **DM99915** is the maximum bit address available;
- in Klinkmann OMRHLINK Communication Server **four** digit numbers are used to specify the channel (word address), for example **DM099915** and the maximum bit address available e.g. for “C/CPM2/CPM2C” PLCs is **DM999915**.

CS1/CJ1/CJ2 PLCs

The following table lists the supported item names for the **CS1/CJ1/CJ2** PLCs:

Memory Area	Prefix	Tag Type	Range	Value Range	Format Suffix
CIO Area (Bit status)	CIO	Discrete	CIO000000...CIO614315 CIO0.00...CIO6143.15	0, 1	
CIO Area (Word contents)	CIO	Integer	CIO0...CIO6143 0...6143	(*)	u s b f r g l m d e c
Work Area (Bit status)	W	Discrete	W000000...W051115 W0.00...W511.15	0, 1	
Work Area (Word contents)	W	Integer	W0...W511	(*)	u s b f r g l m d e c
Holding Area (Bit status)	H	Discrete	H000000...H051115 H0.00...H511.15	0, 1	
Holding Area (Word contents)	H	Integer	H0...H511	(*)	u s b f r g l m d e c
Auxiliary Area (Bit status) (**)	A	Discrete	A000000...A095915 A0.00... A959.15	0, 1	
Auxiliary Area (Word contents) (**)	A	Integer	A0... A959	(*)	u s b f r g l m d e c
Data Memory DM Area (Bit status)	D DM	Discrete	D0000000...D3276715 DM0000000...DM3276715 D0.00...D32767.15	0, 1	
Data Memory DM Area (Word cont.)	D DM	Integer	D0...D32767 DM0...DM32767	(*)	u s b f r g l m d e c
Extended Data (Bit status) (***)	E EM	Discrete	E0000000...E3276715 EM0000000...EM3276715 E0.00...E32767.15	0, 1	
Extended Data (Word cont.) (***)	E EM	Integer	E0...E32767 EM0...EM32767	(*)	u s b f r g l m d e c
Timer Completion Flags (****)	T	Discrete	T0...T4095	0, 1	
Counter Completion Flags (****)	C	Discrete	C0...C4095	0, 1	
Timer PVs	PVT PT	Integer	PVT0...PVT4095 PT0...PT4095	(*)	u s b f r g l m d e c
Counter PVs	PVC PC	Integer	PVC0...PVC4095 PC0...PC4095	(*)	u s b f r g l m d e c
Index Registers	IR	Long	IR0...IR15	(*)	m
Data Registers (****)	DR	Integer	DR0...DR15	(*)	u s b

In **Prefix** and **Range** columns, the prefixes and range in bold are preferable.

(*) Value range for unsigned integers is from 0 to 65535 (item/point name with suffix "**U**" ("**u**") or without suffix), for signed integers from -32768 to 32767 (item/point name with suffix "**S**" ("**s**") and for 16-bit BCD is from 0 to 9999. The value range for long or 32-bit

integer is from -2147483648 to 2147483647 and for 32-bit BCD is from 0 to 99999999. Default value range for Integer Tag Type is unsigned integer.

(**) Data cannot be written to addresses A000...A447 in the Auxiliary Area.

(***) Current bank only (Memory Area code 98).

(****) Timer Completion flags and Counter Completion flags are read only.

(*****) Not supported on CJ1 and CJ2 controllers.

If item/point represents a separate bit in word area (relevant in **CIO**, **W**, **H**, **A**, **D** and **E** areas), then two conventions can be used for item/point naming:

- 1) Item/point names without word/bit separator are supported for compatibility with Wonderware Hostlink I/O Server item naming. The word address in this case is specified by the leftmost five digits (**D** and **E** items) or by leftmost four digits (**CIO**, **W**, **H** or **A** items). Therefore every item name, representing the Bit, must contain 7 digits (**D** and **E** area, e.g. D0001007 is a bit 7 in D area address 10) or 6 digits (**CIO**, **W**, **H** and **A** items, e.g. H000412 is a bit 12 in H area address 4). If necessary, address in item name contains leading zeroes.
- 2) Character '.' (or ':') can be used as a separator between word address and bit address. For example, bit number 3 in word number 100 of CIO area can be specified as CIO100.03 (or CIO100:03).

The following examples show the correct format for item names for CS1 and CJ1 PLCs:

CIO000201	-	CIO Area (Bit), word address 2, bit number 1
CIO2.01	-	CIO area (Bit status), word address 2, bit number 1.
CIO257	-	CIO Area (Word contents), word address 257
H006210	-	Holding Area (Bit), word address 62, bit number 10
DM21	-	Data Memory Area with word address 21

CV-series PLCs

The following table lists the supported item names for the **CV-series** PLCs:

Memory Area	Prefix	Tag Type	Address Range	Value Range	Suffix
Input/Output register area CIO (Bit status)	CIO	Discrete	CIO000000...CIO255515 CIO0.00...CIO2555.15	0, 1	f
Input/Output register area CIO (Word contents)	CIO	Integer	CIO0...CIO2555 0...2555	(*)	u s b f r g l m d e c
Bus Link Area G (Bit status)	G	Discrete	G000000...G025515 0.00... G255.15	0, 1	f
Bus Link Area G (Word contents)	G	Integer	G0... G255	(*)	u s b f r g l m d e c
Auxiliary Relay area A (Bit status)	A	Discrete	A000000... A051115 A0.00... A511.15	0, 1	
Auxiliary Relay area A (Words)	A	Integer	A0... A511	(*)	u s b f r g l m d e c
Timer Completion flags TIM (**)	T	Discrete	T0...T1023(**)	0, 1	f
Counter Completion flags CNT (**)	C	Discrete	C0... C1023(**)	0, 1	f
Timer Present Value(***)	PVT PT	Integer	PVT0...PVT1023 PT0...PT1023	(*)	u s b f r g l m d e c
Counter Present Value(***)	PVC PC	Integer	PVC0...PVC1023 PC0...PC1023	(*)	u s b f r g l m d e c
Data Memory area (Bit status)(***)	D DM	Discrete	D0000000...D2457515 DM0000000...DM2457515 D0.00...D24575.15	0, 1	
Data Memory area (Word contents) (***)	D DM	Integer	D0...D24575 DM0...DM24575	(*)	u s b f r g l m d e c
Transition Area flags (**)	TN	Discrete	TN0...TN1023(**)	0,1	
Step Area Flag status (**)	ST SA	Integer	ST0...ST1023(**) SA0...SA1023	0,1,2,3	
Step Area status (**)	SS	Integer	SS0...SS1023(**)	0,1,2,3	
Step Timer Present Value (**)	ST	Integer	ST0...ST1023(**)	(*)	u s b f r g l m d e c

Expansion area Current bank (Bit status)	E EM	Discrete	E000000...E3276515 EM0000000...EM3276515 E0.00...E32765.15	0, 1	
Expansion area Current bank (Word contents)	E EM	Integer	E0...E32765 EM0...EM32765	(*)	u s b f r g l m d e c
Expansion area A (Bit status)	EA	Discrete	EA0:00...EA32765:15	0, 1	
Expansion area A (Word contents)	EA	Integer	EA0...EA32765	(*)	u s b f r g l m d e c
Expansion area B (Bit status)	EB	Discrete	EB0:00...EB32765:15	0, 1	
Expansion area B (Word contents)	EB	Integer	EB0...EB32765	(*)	u s b f g l m d e c
Expansion area C (Bit status)	EC	Discrete	EC0:00...EC32765:15	0, 1	
Expansion area C (Word contents)	EC	Integer	EC0...EC32765	(*)	u s b f r g l m d e c
Expansion area D (Bit status)	ED	Discrete	ED0:00...ED32765:15	0, 1	
Expansion area D (Word contents)	ED	Integer	ED0...ED32765	(*)	u s b f r g l m d e c
Expansion area E (Bit status)	EE	Discrete	EE0:00...EE32765:15	0, 1	
Expansion area E (Word contents)	EE	Integer	EE0...EE32765	(*)	u s b f r g l m d e c
Expansion area F (Bit status)	EF	Discrete	EF0:00...EF32765:15	0, 1	
Expansion area F (Word contents)	EF	Integer	EF0...EF32765	(*)	u s b f r g l m d e c
Expansion area G (Bit status)	EG	Discrete	EG0:00...EG32765:15	0, 1	
Expansion area G (Word contents)	EG	Integer	EG0...EG32765	(*)	u s b f r g l m d e c
Expansion area H (Bit status)	EH	Discrete	EH0:00...EH32765:15	0, 1	
Expansion area H (Word contents)	EH	Integer	EH0...EH32765	(*)	u s b f r g l m d e c
Action Area Flag status	AC	Discrete	AC0...AC2047	0, 1	

Register Area contents IR (**)	IR	Integer	IR0...IR2	(*)	u s b f r g l m d e c
Register Area contents DR (**)	DR	Integer	DR0...DR2	(*)	u s b f r g l m d e c

In **Prefix** and **Address Range** columns, the prefixes and range in bold are preferable.

(*) Value range for unsigned integers is from 0 to 65535 (item/point name with suffix "**U**" ("**u**") or without suffix), for signed integers from -32768 to 32767 (item/point name with suffix "**S**" ("**s**") and for 16-bit BCD is from 0 to 9999. The value range for 32-bit integers is from -2147483648 to 2147483647 and for 32-bit BCD is from 0 to 99999999. Default value range for Integer Tag Type is unsigned integer.

(**) Read only

(***) Represented memory area ranges are for CV1000, CV2000 and CVM1-CPU11-E models (except Transition Area and Step Area Flag status) type controllers. For CV500 and CVM1-CPU01-E models (except Transition Area and Step Area Flag status) - accessible memory area ranges are 0.00...511.15 for Discrete items and 0...511 - for Integer items. Transition Area TN and Step Area Flag status area ST are not supported on CVM1 PLCs.

(****) Represented memory area ranges are for CV1000, CV2000 and CVM1-CPU11-E models. For CV500 and CVM1-CPU01-E models - accessible memory area range is 0...8191.

Expansion area Current bank as well as Expansion areas (from EA to EH) is relevant only with CV1000 and CV2000 PLCs.

Item names **IR** and **DR** are valid with following Omron PLC models: CV1000, CV2000 and CVM1-CPU11-E.

If item/point represents a separate bit in word area (relevant in **CIO**, **G**, **A**, **DM**, **EM** or **EA** ...**EH** areas), then two conventions can be used for item/point naming:

- 1) Item/point names without word/bit separator are supported for compatibility with Wonderware Hostlink I/O Server item naming. The word address in this case is specified by the leftmost five digits (**D** and **E** items) or by leftmost four digits (**CIO**, **A** and **G** items). Therefore every item name, representing the Bit, must contain 7 digits (**D** and **E** area, e.g. D0001007 is a bit 7 in D area address 10) or 6 digits (**CIO**, **A** and **G** items, e.g. A000412 is a bit 12 in A area address 4). If necessary, address in item name contains leading zeroes.
- 2) Character '.' (or ':') can be used as a separator between word address and bit address. For example, bit number 3 in word number 100 of CIO area can be specified as CIO100.03 (or CIO100:03).

The configuration of the discrete data can be as follows:

Flag or Bit Status	0: Bit is OFF 1: Bit is ON
Step Status	0: INACTIVE 1: HALT 2: PAUSE 3: EXECUTE

The following examples show the correct format for item names for CV-series PLCs:

CIO002113	-	CIO area (Bit status), word address 21, bit number 13
CIO1.15	-	CIO area (Bit status), word address 1, bit number 15
CIO211	-	CIO area (Word contents), word address 211
TN200	-	Transition Area flag, address 200
SS0007	-	Step Area status, address 7 (address in item name contains leading zeroes, but number of digits in item name does not exceed the limit according to table)
AC6	-	Action Area Flag status, address 6
DM3R	-	real (floating point) item, value is taken from words DM3 and DM4

C200HX/C200HG/C200HE PLCs and SYSMAC Board

The following table lists the supported item names for the **C200HX**, **C200HG** and **C200HE** PLCs. Item list is also useful for **SYSMAC Board** because of the SYSMAC Board is functionally equivalent to the SYSMAC C200HG-CPU43-E or C200HX-CPU64-E PLC.

Memory Area	Prefix	Tag Type	Address Range	Value Range	Suffix
Internal Relay Area 1, 2 Special Relay Area 1, 2 (Bit status)	IR	Discrete	IR00000...IR51115 IR0.00...IR511.15	0, 1	
Internal Relay Area 1, 2 Special Relay Area 1, 2 (Word contents)	IR	Integer	IR0... IR511 0...511	(*)	u s b f r g l m d e c
Link Relay Area (Bit status)	LR	Discrete	LR00000...LR06315 LR0.00...LR63.15	0, 1	
Link Relay Area (Word contents)	LR	Integer	LR0... LR63	(*)	
Holding Relay Area (Bit status)	HR	Discrete	HR00000...HR09915 HR0.00... HR99.15	0, 1	
Holding Relay Area (Word contents)	HR	Integer	HR0... HR99	(*)	u s b f r g l m d e c
Auxiliary Relay Area (Bit status)	AR	Discrete	AR00000...AR02715 AR0.00... AR27.15	0, 1	
Auxiliary Relay Area (Word contents)	AR	Integer	AR0... AR27	(*)	u s b f r g l m d e c
Timer/Counter Area Completion Flag(****)	TC	Discrete	TC0... TC511	0, 1	
Timer/Counter Area (PV)	PV	Integer	PV0... PV511	(*)	u s b f r g l m d e c
Data Memory Area (Bit status)(**)	DM	Discrete	DM000000... DM999915 DM0.00... DM9999.15	0, 1	
Data Memory Area (Word contents)(**)	DM	Integer	DM0...DM9999	(*)	u s b f r g l m d e c

In **Prefix** and **Address Range** columns, the prefixes and range in bold are preferable.

(*) Value range for unsigned integer is from 0 to 65535 (item/point name with suffix "**U**" ("**u**") or without suffix), for signed integers from -32768 to 32767 (item/point name with suffix "**S**" ("**s**") and for 16-bit BCD is from 0 to 9999. The value range for 32-bit integer is from -2147483648 to 2147483647 and for 32-bit BCD is from 0 to 99999999. Default value range for Integer Tag Type is unsigned integer.

(**) Memory area range DM7000...DM9999 is supported only if Expansion DM Area is allocated on the PLC.

(***) Current bank only (Memory Area code 98).

(****) Read only

If item/point represents a separate bit in word area (relevant in **IR**, **LR**, **HR**, **AR** or **DM** areas), then two conventions can be used for item/point naming:

- 1) Item/point names without word/bit separator are supported for compatibility with Wonderware Hostlink I/O Server item naming. The word address in this case is specified by the leftmost for digits (for **DM** area, e.g. DM001007 is a bit 7 in DM area address 10) or by leftmost three digits (for **IR**, **LR**, **HR** and **AR** areas, e.g. HR00412 is a bit 12 in HR area address 4). Therefore every item name, representing the Bit, must contain 6 digits (**DM** items) or 5 digits (**IR**, **LR**, **HR** and **AR** items). If necessary, address in item name contains leading zeroes.

Note - in Wonderware Omron Host Link I/O Server (OMRONHL) for C-Series PLCs only **three** digits can be used to specify the channel (word address), e.g. **DM99915** is the maximum bit address available, so that must be considered if moving from Wonderware OMRONHL Server to Klinkmann OMRHLINK Server.

- 2) Character '.' (or ':') can be used as a separator between word address and bit address. For example, bit number 3 in word number 100 of IR area can be specified as IR100.03 (or IR100:03).

The following examples show the correct format for item names for C200HX, C200HG, C200HE PLCs:

IR00201	-	Internal Relay Area (Bit status), word address 2, bit number 1
IR2.01	-	Internal Relay Area (Bit status), word address 2, bit number 1
IR257	-	Special Relay Area (Word contents), word address 257
LR06210	-	Link Relay Area (Bit status), word address 62, bit number 10
DM21	-	Data Memory Area (Word contents), word address 21

C/CPM2x PLCs

The following table lists the supported item names for the **C-series** PLCs:

Memory Area	Prefix	Tag Type	Range	Value Range	Format Suffix
CIO area (Bit status)(**)	IR	Discrete	IR00000...IR51115 IR0.00...IR511.15	0, 1	
CIO area (Word contents) (**)	IR	Integer	IR0... IR511 0...511	(*)	u s b f r g l m d e c
Latching Relay area (Bit status)	LR	Discrete	LR00000...LR06315 LR0.00...LR63.15	0, 1	
Latching Relay area (Word contents)	LR	Integer	LR0...LR63	(*)	u s b f r g l m d e c
Holding Relay area (Bit status)	HR	Discrete	HR00000...HR09915 HR0.00...HR99.15	0, 1	
Holding Relay area (Word contents)	HR	Integer	HR0...HR99	(*)	u s b f r g l m d e c
Auxiliary Relay area (Bit status)	AR	Discrete	AR00000...AR02715 AR0.00...AR27.15	0, 1	
Auxiliary Relay area (Word contents)	AR	Integer	AR0...AR27	(*)	u s b f r g l m d e c
Completion flags for Timers/Counters(***)	TC	Discrete	TC0...TC511	0, 1	
Present Values for Timers/Counters	PV	Integer	PV0...PV511	(*)	u s b f r g l m d e c
Data Memory area (Bit status)	DM	Discrete	DM000000... DM999915 DM0.0...DM9999.15	0, 1	
Data Memory area (Word contents)	DM	Integer	DM0...DM9999	(*)	u s b f r g l m d e c

In **Prefix** and **Range** columns, the prefixes and range in bold are preferable.

(*) Value range for unsigned integer is from 0 to 65535 (item/point name with suffix "**U**" ("**u**") or without suffix), for signed integers from -32768 to 32767 (item/point name with suffix "**S**" ("**s**") and for 16-bit BCD is from 0 to 9999. The value range for 32-bit integer is from -2147483648 to 2147483647 and for 32-bit BCD is from 0 to 99999999. Default value range for Integer Tag Type is unsigned integer.

(**) Represented memory area range is for C200HS type controller. For models C200H, C1000H and C2000H - accessible memory area ranges are 0:00...255:15 for Discrete items and 000...255 for Integer items.

(***) Read only

The following table lists the supported item names for the **CPM2x** PLCs:

Memory Area	Prefix	Tag Type	Range	Value Range	Format Suffix
IR & SR areas (Bit status)(***)	IR	Discrete	IR00000...R25515 IR0.00...IR255.15	0, 1	
IR & SR areas (Word contents) (***)	IR	Integer	IR0...IR255 0...255	(*)	u s b f r g l m d e c
Latching Relay area (Bit status)	LR	Discrete	LR00000...LR01515 LR0.00... LR15.15	0, 1	
Latching Relay area (Word contents)	LR	Integer	LR0... LR15	(*)	u s b f r g l m d e c
Holding Relay area (Bit status)	HR	Discrete	HR00000...HR01915 HR0.00... HR19.15	0, 1	
Holding Relay area (Word contents)	HR	Integer	HR0... HR19	(*)	u s b f r g l m d e c
Auxiliary Relay area (Bit status)	AR	Discrete	AR00000... AR02315 AR0.00... AR23.15	0, 1	
Auxiliary Relay area (Word contents)	AR	Integer	AR0... AR23	(*)	u s b f r g l m d e c
Completion flags for Timers/Counters(**)	TC	Discrete	TC0... TC255	0, 1	
Present Values for Timers/Counters	PV	Integer	PV0... PV255	(*)	u s b f r g l m d e c
Data Memory area (Bit status) (****)	DM	Discrete	DM000000... DM665515 DM0.0...DM6655.15	0, 1	
Data Memory area (Word contents) (****)	DM	Integer	DM0...DM6655	(*)	u s b f r g l m d e c

In **Prefix** and **Range** columns, the prefixes and range in bold are preferable.

(*) Value range for unsigned integer is from 0 to 65535 (item/point name with suffix "**U**" ("**u**") or without suffix), for signed integers from -32768 to 32767 (item/point name with suffix "**S**" ("**s**")) and for 16-bit BCD is from 0 to 9999. The value range for 32-bit integer is from -2147483648 to 2147483647 and for 32-bit BCD is from 0 to 99999999. Default value range for Integer Tag Type is unsigned integer.

(**) Read only

(***) Addresses 50 to 199 in IR & SR area in CPM2A/CPM2C PLCs and 20 to 199 in IR & SR area in CPM1/CPM1A/SRM1(-V2) PLCs are read only.

(****) Addresses DM1024 to DM6143 in CPM1/CPM1A PCs and DM2048 to DM6143 in CPM2A/CPM2C/SRM1(-V2) PCs are read only.

If item/point represents a separate bit in word area (relevant in **IR**, **LR**, **HR**, **AR** or **DM** areas), then two conventions can be used for item/point naming:

- 1) Item/point names without word/bit separator are supported for compatibility with Wonderware Hostlink I/O Server item naming. The word address in this case is specified by the leftmost for digits (for **DM** area, e.g. DM001007 is a bit 7 in DM area address 10) or by leftmost three digits (for **IR**, **LR**, **HR** and **AR** areas, e.g. HR00412 is a bit 12 in HR area address 4). Therefore every item name, representing the Bit, must contain 6 digits (**DM** items) or 5 digits (**IR**, **LR**, **HR** and **AR** items). If necessary, address in item name contains leading zeroes.
Note - in Wonderware Omron Host Link I/O Server (OMRONHL) for C-Series PLCs only **three** digits can be used to specify the channel (word address), e.g. **DM99915** is the maximum bit address available, so that must be considered if moving from Wonderware OMRONHL Server to Klinkmann OMRHLINK Server.
- 2) Character '.' (or ':') can be used as a separator between word address and bit address. For example, bit number 3 in word number 100 of IR area can be specified as IR100.03 (or IR100:03).

The following examples show the correct format for item names for C/CPM2x PLCs:

- IR00201 - CIO area (Bit status), word address 2, bit number 1
- IR2.01 - CIO area (Bit status), word address 2, bit number 1
- ir211 - CIO area (Word contents), word address 211
- LR6210 - Latching Relay area (Bit status), word address 62, bit number 10
- DM21 - Data Memory area (Word contents), word address 21

CQM1 PLCs

The following table lists the supported item names for the **CQM1** PLCs:

Memory Area	Prefix	Tag Type	Range	Value Range	Format Suffix
IR & SR area (Bit status)(**)	IR	Discrete	IR00000...IR25515 IR0.00...IR255.15	0, 1	
IR & SR area (Word contents)(**)	IR	Integer	IR0...IR255 or 0...255	(*)	u s b f r g l m d e c
LR area (Bit status)	LR	Discrete	LR00000...LR06315 LR0.00...LR63.15	0, 1	
LR area (Word contents)	LR	Integer	LR0...LR63	(*)	u s b f r g l m d e c
HR area (Bit status)	HR	Discrete	HR00000...HR09915 HR0.00...HR99.15	0, 1	
HR area (Word contents)	HR	Integer	HR0...HR99	(*)	u s b f r g l m d e c
AR area (Bit status)	AR	Discrete	AR00000...AR02715 AR0.00...AR27.15	0, 1	
AR area (Word contents)	AR	Integer	AR0...AR27	(*)	u s b f r g l m d e c
Completion flags for Timers/Counters(***)	TC	Discrete	TC0...TC511	0, 1	
Present Values for Timers/Counters	PV	Integer	PV0...PV511	(*)	u s b f r g l m d e c
DM area (Bit status)	DM	Discrete	DM000000... DM665515 DM0.0...DM6655.15	0, 1	
DM area (Word contents)	DM	Integer	DM0...DM6655	(*)	u s b f r g l m d e c
EM area (Bit status)	EM	Discrete	EM000000... EM614315 EM0.0...EM6143.15	0, 1	
EM area (Word contents)	EM	Integer	EM0...EM6143	(*)	u s b f r g l m d e c

In **Prefix** and **Address Range** columns, the prefixes and range in bold are preferable.

(*) Value range for unsigned integer is from 0 to 65535 (item/point name with suffix "**U**" ("**u**") or without suffix), for signed integers from -32768 to 32767 (item/point name with suffix "**S**" ("**s**")) and for 16-bit BCD is from 0 to 9999. The value range for 32-bit integer is from -2147483648 to 2147483647 and for 32-bit BCD is from 0 to 99999999. Default value range for Integer Tag Type is unsigned integer.

(**) Represented memory area available in CQM1H-CPU61 CPU.

(***) Read only

If item/point represents a separate bit in word area (relevant in **IR**, **LR**, **HR**, **AR**, **DM** or **EM** areas), then two conventions can be used for item/point naming:

- 1) Item/point names without word/bit separator are supported for compatibility with Wonderware Hostlink I/O Server item naming. The word address in this case is specified by the leftmost for digits (for **DM** and **EM** areas, e.g. DM001007 is a bit 7 in DM area address 10) or by leftmost three digits (for **IR**, **LR**, **HR** and **AR** areas, e.g. HR00412 is a bit 12 in HR area address 4). Therefore every item name, representing the Bit, must contain 6 digits (**DM** and **EM** items) or 5 digits (**IR**, **LR**, **HR** and **AR** items). If necessary, address in item name contains leading zeroes.
Note - in Wonderware Omron Host Link I/O Server (OMRONHL) for C-Series PLCs only **three** digits can be used to specify the channel (word address), e.g. **DM99915** is the maximum bit address available, so that must be considered if moving from Wonderware OMRONHL Server to Klinkmann OMRHLINK Server.
- 2) Character '.' (or ':') can be used as a separator between word address and bit address. For example, bit number 3 in word number 100 of IR area can be specified as IR100.03 (or IR100:03).

The following examples show the correct format for item names for CQM1 PLCs:

IR00201	-	IR Input area (Bit status), word address 2, bit number 1
IR2.01	-	IR Input area (Bit status), word address 2, bit number 1
IR102	-	IR Output area (Word contents), word address 102
LR62.10	-	LR area (Bit status), word address 62, bit number 10
DM21	-	DM area (Word contents), word address 21

Monitoring and Controlling Communication with a PLC

For each topic, there are following additional items offered by OMRHLINK Server to monitor and control the communication with PLC.

STATUS

For each topic, there is a built-in discrete item that indicates the state of communication with PLC. The discrete item (**STATUS**) is set to **0** when communication fails and set to **1** when communication is successful.

Note!

*The STATUS value will change to 0 (OFF) not immediately after first communication fault, but only after consecutive **SlowPollRetries** (see [Troubleshooting/ WIN.INI entries](#) section below) simultaneously when Topic is changed to slow poll mode.*

From **InTouch** the state of communication may be read by defining an I/O Discrete tagname and associating it with the topic configured for the PLC and using **STATUS** as the item name.

From **Excel**, the status of the communication may be read by entering the following formula in a cell:

=OMRHLINK|topic!STATUS

UPDATEINTERVAL

The **UPDATEINTERVAL** item is an Integer type Read/Write item used to access the currently set Update Interval (see Topic Definition Command). It indicates the current requested update interval (in milliseconds). The value of this item can be read through DDE, OPC or Suite Link. Client can poke new values to this item. The range of valid values is from 0 to 2147483647 milliseconds. The value of zero indicates that no items on this topic are updated. The write commands are still executed (new values written to PLC) if **UPDATEINTERVAL** value is 0.

Note: By poking a value of zero to the **UPDATEINTERVAL** item, a client can stop all update activities on the corresponding topic without having to deactivate the items.

MAXINTERVAL

The **MAXINTERVAL** item is an Integer type Read Only item used to access the measured maximum update interval (in milliseconds) of all items for the corresponding topic for the last completed poll cycle. The range of valid values is from 0 to 2147483647 milliseconds.

The **UPDATEINTERVAL** and **MAXINTERVAL** items can be used to tune the performance of communication.

ITEMCOUNT

The **ITEMCOUNT** item is an Integer type Read Only item used to access the number of active items in the corresponding topic. The range of valid values is from 0 to 2147483647.

ERRORCOUNT

The **ERRORCOUNT** item is an Integer type Read Only item used to access the number of active items with errors in the corresponding topic. The range of valid values is from 0 to 2147483647.

ERRORITEMS

The **ERRORITEMS** item is an Integer type Read/Write Only (unique for each topic) used to access the total number of items with invalid item names (these items are rejected by Server). The **ERRORITEMS** value can be reset by writing 0 to this item. The range of valid values is from 0 to 2147483647.

WRITECOUNT

The **WRITECOUNT** item is an Integer type Read Only item used to access the number of write commands (messages) waiting for execution. The range of valid values is from 0 to 2147483647.

For example, in following way the **WRITECOUNT** item can be used to avoid the increasing of memory occupied by not executed write commands:

- activate the hot link with **WRITECOUNT** item and start to monitor it;
- activate new write command (by poking new value) only if value of **WRITECOUNT** becomes equal to 0, e.g. all previous write commands are executed and memory occupied by them is freed.

SUSPEND

Special Read/Write Discrete Item **SUSPEND** may be used to control the communication with a separate topic. If application changes **SUSPEND** value from 0 to 1 then communication with topic is suspended. If **SUSPEND** value is changed back to 0 then communication with this topic is resumed.

Notes:

1. If topic is suspended by setting **SUSPEND** value to 1, then Server rejects all new write values to this topic, i.e. no new write messages are created after **SUSPEND** value has changed from 0 to 1.
2. The **SUSPEND** item is not related with **Suspend Protocol / Resume Protocol** debugging choice available from OMRHLINK Server system menu (see [Troubleshooting/Troubleshooting menu](#) section below) – the **Suspend Protocol** suspends communication with **all** Topics, as well as in this state new write messages are still created.

Using the OMRHLINK Server with OPC Clients

The "OPC & DDE" version of OMRHLINK Server is accessible from OPC Clients.

There are the following general steps needed to access an OPC item from OMRHLINK Server:

1. Run OPC Client application and select the "OMRHLINK OPC and DDE Server" from the list of available OPC Servers. If OMRHLINK Server currently is not running, it will start automatically.
2. Create a new group (or topic if Wonderware OPCLink application is used).
3. If OPC Client supports the validating of items, validate the item before adding it.
4. Add the item. Depending on OPC Client it can be done in several different ways, for example:
 - a) By entering separately the access path to topic name (valid topic name configured in OMRHLINK Topic definition) and separately the item name.
 - b) By entering the full path to item name in the format **TopicName.ItemName** where **TopicName** is the valid topic name configured in OMRHLINK Topic definition.
 - c) By browsing the server address space.

By default the OMRHLINK Server is installed and used as a local OPC Server - both OPC Server and OPC Client reside on same computer. The OMRHLINK Server can run also as a remote OPC Server – in this case OPC Server and OPC Client are located on separate computers. Accessing the remote OPC Server is same as for local OPC Server, but some DCOM (Distributed COM) configuration is required before accessing the remote OPC Server. The DCOM configuration must be done both on OPC Server and OPC Client computers.

Configuring DCOM

To access OMRHLINK Server as a remote OPC Server, it is necessary to install OMRHLINK Server on both (OPC Server and OPC Client) computers. (The OMRON FinsGateway software must be installed on both computers otherwise OMRHLINK Server does not run.) Also the DCOM must be configured on both computers.

After Server installation the System Administrator must configure DCOM by **Dcomcnfg.exe** (or Dcomcnfg32.exe for Win9x) system tool. This utility is located in the Windows system directory – e.g. in \WinNT\system32\ or \Win9x\system\.

Below is a simple example how to configure DCOM on NT Workstations for OPC Server computer (computer name *JohnB*) and on OPC Client computer (computer name *SteveL*).

Action	Remote OPC Server Computer name – <i>JohnB</i>	OPC Client Computer name – <i>SteveL</i>
Install the OPC Server.	✓	✓
Run Dcomcnfg.exe	✓	✓
Invoke Default Properties and set Default Authentication Level to <i>(None)</i> , Default Impersonation Level to <i>Impersonate</i> .	✓	✓
Select OPC Server from Applications list and click on the Properties... button. Click on the Location tab, uncheck Run application on this computer , check Run application on the following computer and browse the remote computer <i>JohnB</i> .		✓
Edit Security settings: 1) set the following custom access permissions : NETWORK, SYSTEM, <i>SteveL</i> ; 2) set the following custom launch permissions : INTERACTIVE, SYSTEM, NETWORK, <i>SteveL</i> ; 3) be sure the Default Configuration Permissions contain SYSTEM.	✓	
Click on the Identity tab and select The interactive user .	✓	

Before starting a remote OPC Server, be sure the OPC Server computer and OPC Client computer can access each other on the network. The "Remote Procedure Call" Service should be started on OPC Server computer.

Now remote OPC Server is accessible for OPC Client on computer *SteveL*. To allow the access to more OPC Clients, configure DCOM on each OPC Client computer.

The following table contains most frequent errors when configuring DCOM.

Error message	Possible reason
DCOM not installed	DCOM has not been installed
Server execution failed	<ol style="list-style-type: none"> 1) OPC Server can not be started 2) Identity for OPC server not properly configured 3) OPC Server is not located on a local hard disk 4) OPC Server path in registry is too long or uses LFN (Long File Names) 5) DCOMCNFG Location is not set to Run on this computer.
Class not registered	OPC Server has not been registered
RPC server is unavailable	<ol style="list-style-type: none"> 1) Remote Procedure Call service is not running on the OPC Server computer 2) Invalid computer name for remote OPC Server 3) Make sure TCP/IP is installed properly
Interface not supported	<ol style="list-style-type: none"> 1) Permission not granted to OPC Client 2) Guest account disabled
Access is denied	<ol style="list-style-type: none"> 1) DCOM security not configured properly 2) OPC Server application not located on local hard disk 3) SYSTEM account in DCOMCNFG must have Access, Launch and Configure privileges
Error 80070776	Network error - TCP/IP has not been configured properly
Catastrophic failure	<ol style="list-style-type: none"> 1) Trying to access an object before it is created 2) Unhandled exception is occurs on the OPC Server
Not enough storage	SYSTEM account in DCOMCNFG must have Access , Launch and Configure privileges

Running OMRHLINK "OPC & DDE" version as Windows NT Service

To install OMRHLINK Server "OPC & DDE" version to run as **Windows NT Service**, the OMRHLINK Server must be started with command line parameter `"/Service"`:

OMRHLINK /Service

After this the "OMRHLINK OPC & DDE Server" NT Service will be installed with Startup type "Manual". The Service Startup configuration can be changed by MS Windows NT *Control Panel/Services* configuration dialog boxes. The **Allow Service to Interact with Desktop** checkbox in "Service" dialog box must be checked (the "Service" dialog box can be invoked by pressing the "Startup" button on "Services" dialog box when Service **OMRHLINK OPC & DDE Server** is selected). If **Allow Service to Interact with Desktop** is not selected then OMRHLINK Server full functionality is not ensured (e.g. the Server configuration can not be changed, no message boxes will be displayed, etc.).

To use OMRHLINK Server "OPC & DDE" version as Windows NT Service you may need to configure DCOM. For details of configuring DCOM refer to *Configuring DCOM* section

of this manual. If "OMRHLINK OPC & DDE Server" NT Service will be accessed only from local OPC clients (i.e. OMRHLINK Server will not be used as a remote OPC Server), then **custom access** and **launch permissions** "NETWORK" are not needed.

To uninstall "OMRHLINK OPC & DDE Server" NT Service, at first the Service must be stopped by *Control Panel/Services/Stop* and then OMRHLINK Server must be started manually with command line parameter `"/DelService"`:

OMRHLINK /DelService

After this the OMRHLINK Server "OPC & DDE" version will be still registered and accessible to OPC clients.

Using OMRHLINK with OPCLink Server

The Wonderware OPCLink I/O Server (hereafter referred to as "OPCLink") is a Microsoft Windows application program that acts as a communication protocol converter and allows other Windows application programs access to data from local or remote OPC servers. OPCLink connects to OPC servers, converts client commands to OPC protocol and transfers data back to clients using DDE, FastDDE, or Suite Link protocols.

Please refer to ***Wonderware OPCLink Server and OPC Browser User's Guide*** for details how to install, start and use the OPCLink Server. The following information in this section covers only the most important points about using "OPC & DDE" version of OMRHLINK Server with OPCLink Server.

OPCLink Topic Definition

The **Topic Definition** option from OPC Link Configure menu is used to create, modify, or delete OPCLink topic definitions. If OPC Link will communicate with OMRHLINK Server then there must exist one or more topics defined for OMRHLINK Server. There are following important fields on the "OPCLink Topic Definition" dialog box:

Topic Name

Enter a unique name (e.g. **PLC1**) for the PLC in this field. If using InTouch then same Topic Name is to be entered in the "Add Access Name" dialog box when defining the Access Names for OPCLink Server in InTouch WindowMaker.

OPC Server Name

Select the name of the OPC server (**OMRHLINK.OPC_Server.1**) that will be used by this topic. The list box shows the registered OPC servers in the system.

OPC Path

Enter the name of the OPC path (e.g. **PLC1.**) used by this topic. This OPC path is the first part of a full OPC item name string common to all items that will be used in this topic. The available OPC paths for OMRHLINK Server can be obtained by clicking on "Browse" button (this allows to view the OMRHLINK Server's exposed address space).

Update Interval

Enter the frequency (in milliseconds) that the server will acquire data for the items/points associated with this topic. If 0 (zero) is entered here, OPCLink will not gather data from OMRHLINK Server.

Browse

Clicking on this button initiates the browsing through exposed address space of OMRHLINK Server. All currently available item/point names (including data area names and range of addresses) and names of pre-defined (additional) items will appear on "Browse OPC items:" window in alphabetical order.

Accessing OMRHLINK Items via the OPCLink Server

The communication protocol addresses an element of data in a conversation that uses a three-part naming convention that includes the **application name**, **topic name** and **item name**. The following briefly describes each portion of this naming convention:

application name

The name of the Windows program (server) that will be accessing the data element. In the case of data coming from or going to OMRHLINK Server "OPC & DDE" version, the application portion of the address is **OPCLINK**.

topic name

Meaningful names are configured to identify specific devices (PLCs). These names are then used as the topic name in all conversations to that device (PLC). This must be same name as **Topic Name** entered in the "OPCLink Topic Definition" dialog box, for example, **PLC1**.

Note! You can define multiple topic names for the same PLC to poll different points at different rates.

item name

A specific data element within the specified topic. The OPCLink Server item syntax follows the following rules. The item names must start with:

- d – discrete value
- i – integer value
- r – real value
- m – message value

The item name added to the OPC path of the topic (without the heading type letter) must give a fully qualified OPC item name for the OMRHLINK Server. Some examples of possible item names acceptable by OPCLink Server/OMRHLINK Server connection:

dCIO002113

discrete, CIO area (Bit status), word address 21, bit number 13

iDM100

integer, Data Memory area word 100

rDM3R

real, real floating point item, value is taken from Data Memory area words DM3 and DM4

Using the OMRHLINK Server with Suite Link and DDE Clients

The "**Suite Link & DDE**" version of OMRHLINK Server is accessible from Suite Link clients (e.g. InTouch) and DDE clients (e.g. Excel). The "**OPC & DDE**" version of OMRHLINK Server is accessible from DDE clients.

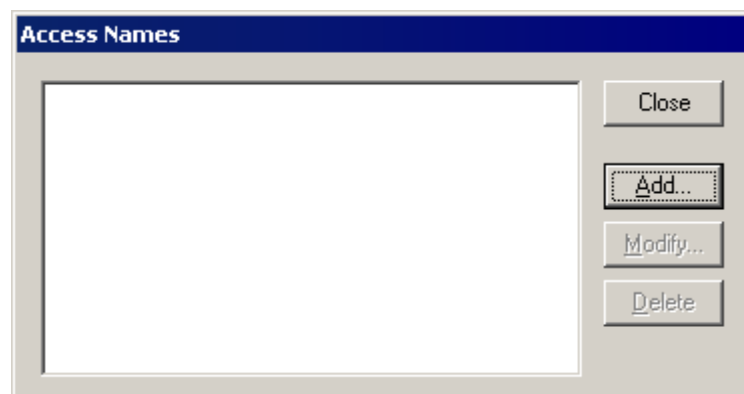
Using the OMRHLINK Server with InTouch

To access items/points on **Omron** PLCs from **InTouch**, the Access Names and Tag names should be defined in **WindowMaker**.

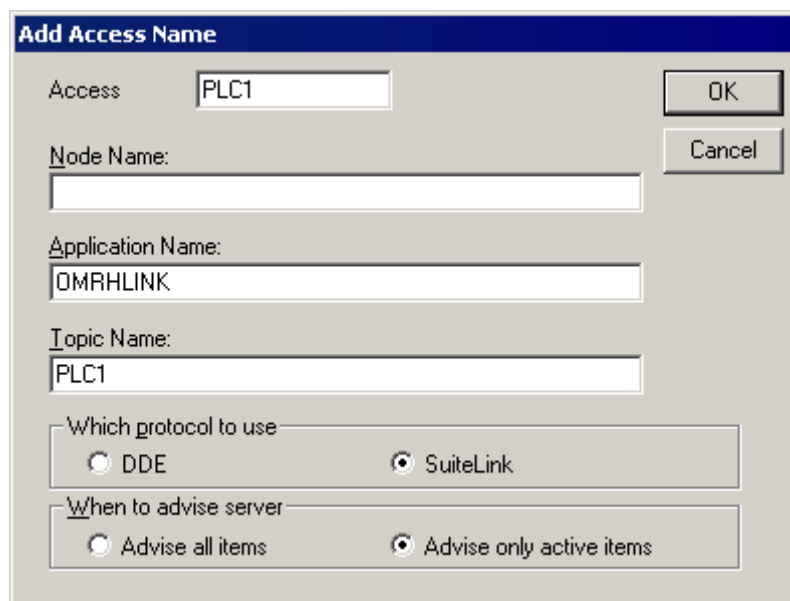
Defining the Access Names

InTouch uses **Access Names** to reference real-time I/O data. Each Access Name equates to an I/O address, which can contain a **Node**, **Application**, and **Topic**. In a distributed application, I/O references can be set up as global addresses to a network I/O Server or local addresses to a local I/O Server.

To define the Access Names in WindowMaker node invoke the */Special/Access Names...* command. The "Access Names" dialog box will appear.



Click on **Add....** The "Add Access Name" Dialog Box will appear:



Note: If **Add** is selected, this dialog box will be blank when it initially appears. Data has been entered here to illustrate the entries that are made.

The following fields are required entries when entering an Access Name Definition:

Access Name

In the Access Name box type the name you want InTouch to use to this Access Name. (For simplicity, use the same name that you will use for the **Topic Name** here.)

Node Name

If the data resides in a network I/O Server, in the Node Name box, type the remote node's name.

Application Name

In the Application Name box, type the actual program name for the I/O Server program from which the data values will be acquired. In case the values are coming from the OMRHLINK Server the OMRHLINK is used. Do not enter the .exe extension portion of the program name.

Topic Name

Enter the name defined for the topic in the OMRHLINK Server to identify the topic the OMRHLINK Server will be accessing.

The Topic Name is an application-specific sub-group of data elements. In the case of data coming from OMRHLINK Server program, the topic name is the exact same name configured for the topic in the OMRHLINK Server.

Note: This will usually be the same as the "Access Name", although, if desired, they may be different. However, it must be the same name used when the topics were configured in section **Configuring the OMRHLINK Server**.

Which protocol to use

Select the protocol (DDE or Suite Link) that you are using.

When to advise server

Select **Advise all items** if you want the Server program to poll for all data whether or not it is in visible windows, alarmed, logged, trended or used in a script. Selecting this option will impact performance, therefore its use is not recommended.

Select **Advise only active items** if you want the Server program to poll only points in visible windows and points that are alarmed, logged, trended or used in any script.

Click **OK** to accept the new Access Name and close the "Add Access Name" dialog box. The "Access Names" dialog box will reappear displaying the new Access Name selected in the list.

Click **Close** to close the "Access Names" dialog box.

Defining the Tag names

To define the Tag names associated with the new "Access Name", invoke the */Special/Tagname Dictionary...* command (in **WindowMaker**). The "Tagname Dictionary" dialog box will appear:

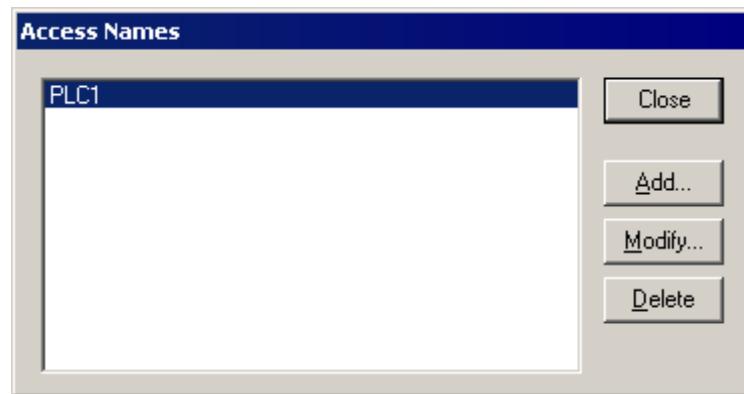
Click on **New** and enter the **Tag Name**. (The tag name defined here is the name **InTouch** will use. The OMRHLINK Server does not see this name.)

Select the tag type by clicking on the **Type:...** button. The "Tag Types" dialog box will appear:

To access OMRHLINK items, the type must be **I/O Discrete**, **I/O Integer**, **I/O Real** or **I/O Message**. Select the Tag type.

The "Details" dialog box for the tag name will appear:

Select the Access Name for OMRHLINK Server by clicking on the **Access Name:...** button. The "Access Names" dialog box will appear:



Select the appropriate Access Name and click on **Close**. (If the Access Name has not been defined as previously described, click on **Add** and define the Access Name now.) The "Details" dialog box will appear displaying the selected Access Name:

Initial Value:	<input type="text" value="0"/>	Min EU:	<input type="text" value="-32768"/>	Max EU:	<input type="text" value="32767"/>
Deadband:	<input type="text" value="0"/>	Min Raw:	<input type="text" value="-32768"/>	Max Raw:	<input type="text" value="32767"/>
Eng Units:	<input type="text"/>	Log Deadband:	<input type="text" value="0"/>	Conversion <input checked="" type="radio"/> Linear <input type="radio"/> Square Root	
Access Name: ...		PLC1			
Item:	<input type="text"/>				<input type="checkbox"/> Use Tagname as Item Name

For integers and reals fill in the **Min EU**, **Max EU**, **Min Raw** and **Max Raw** fields. These fields control the range of values, which will be accepted from the Server and how the values are scaled. If no scaling is desired, **Min EU** should be equal to **Min Raw** and **Max EU** equal to **Max Raw**.

Enter the OMRHLINK item name to be associated with this tagname in the **Item:** field in the "Details" box:

Initial Value:	<input type="text" value="0"/>	Min EU:	<input type="text" value="-32768"/>	Max EU:	<input type="text" value="32767"/>
Deadband:	<input type="text" value="0"/>	Min Raw:	<input type="text" value="-32768"/>	Max Raw:	<input type="text" value="32767"/>
Eng Units:	<input type="text"/>	Log Deadband:	<input type="text" value="0"/>	Conversion <input checked="" type="radio"/> Linear <input type="radio"/> Square Root	
Access Name: ...		PLC1			
Item:	<input type="text" value="DM100s"/>				<input type="checkbox"/> Use Tagname as Item Name

(Refer to the **Item Names** section below for complete details.)

Where applicable, the **Use Tagname as Item Name** option may be selected to automatically enter the tag name in this field. **Note:** *The tag name can only be used if it follows the conventions listed in the **Item Names** section.*

Once all entries have been made, click on the **Save** button (in the top dialog box) to accept the new tagname. To define additional tagnames click on the **New** button. To return to the **WindowMaker** main screen, select **Close**.

Monitoring the Status of Communication with InTouch

InTouch supports built-in topic names called **DDEStatus** and **IOStatus**, which are used to monitor the status of communication between the Server and InTouch. For more information on the built-in topic names DDEStatus and IOStatus, see your online "InTouch User's Guide".

The status of communication between the Server and InTouch can be read into **Excel** by entering the following DDE reference formula in a cell on a spreadsheet (in following examples **PLC1** is the Topic Name configured for OMRHLINK Server):

```
=view|DDEStatus! PLC1
```

or

```
=view|IOStatus! PLC1
```

Notes on Using Microsoft Excel

Data from OMRHLINK topics (nodes) may be accessed from Excel spreadsheets. To do so, enter a formula like the following into a cell on the spreadsheet.

```
=OMRHLINK|topic!item
```

Sometimes, Excel requires the topic and/or item to be surrounded by apostrophes.

In the formula, **topic** must be replaced with one of the valid topic names defined during the Server configuration process. Replace **item** with one of the valid item names described in the **Item Names** section.

Reading Values into Excel Spreadsheets

Values may be read directly into Excel spreadsheets by entering a DDE formatted formula into a cell, as shown in the following examples:

```
=OMRHLINK|'PLC1'!'cio005515'
```

```
=OMRHLINK|'CS1-3'!'SA1000'
```

```
=OMRHLINK|'node10'!'IR2'
```

Note: Refer to the Microsoft Excel manual for complete details on entering Remote Reference formulas for cells.

Writing Values to OMRHLINK Points

Values may be written to the Server from Microsoft Excel by creating an Excel macro that uses the **POKE** command. The proper command is entered in Excel as follows:

```
channel=INITIATE("OMRHLINK", "topicname")
```

```
=POKE(channel, "itemname", Data_Reference)
```

```
=TERMINATE (channel)
```

```
=RETURN()
```

The following describes each of the above **POKE** macro statements:

channel=INITIATE("OMRHLINK ", "topicname")

Opens a channel to a specific topic name (defined in the Server) in an application with name OMRHLINK (the executable name less the .EXE) and assigns the number of that opened channel to **channel**.

Note: By using the **channel=INITIATE** statement the word **channel** must be used in the **=POKE** statement instead of the actual cell reference. The "**applicationname**" and "**topicname**" portions of the formula must be enclosed in quotation marks.

=POKE(channel, "itemname", Data_Reference)

POKEs the value contained in the **Data_Reference** to the specified item name (actual location in the Omron PLC) via the **channel** number returned by the previously executed **INITIATE** function. **Data_Reference** is the row/column ID of the cell containing the data value. For "**itemname**", use some of the valid item names specified like described in the **Item Names** section.

=TERMINATE(channel)

Closes the channel at the end of the macro. Some applications have a limited number of channels. Therefore they should be closed when finished. **Channel** is the channel number returned by the previously executed **INITIATE** function.

=RETURN()

Marks the end of the macro.

The following is an example of Excel macro used to poke value from cell B2 to topic **PLC1** item **DM100**:

```
PokeMacro -Ctrl a
=INITIATE("OMRHLINK", "PLC1")
=POKE(A2, "DM100", B2)
=ON.TIME(NOW()+0.01, "TerminateDDEChannel")
=RETURN()
```

```
TerminateDDEChannel
=TERMINATE(A2)
=RETURN()
```

Note: Refer to the Microsoft Excel manual for complete details on entering Remote Reference formulas for cells.

Notes on Improving Server Performance

1. Consecutive addressing of OMRHLINK items

To increase the performance of OMRHLINK Server, it is highly recommended to use the consecutive addressing of items. For example, access to two consecutive channels (words) in the PLC only takes about 15% longer than access to only one channel. If addresses of channels are widely separated, the access to two channels may take up to twice long as access to only one channel.

For access to discrete items within channels, the OMRHLINK Server must access to whole channel (word) to read one bit. Therefore, access up to 16 bits will take no longer as access to one bit if all 16 bits are in the same channel (word).

2. Writing bits

There is no Host Link command available for **direct bit writing** to Omron PLCs. To write a bit value: into CIO, W, H, A, D and E areas for “**CS1/CJ1**” PLCs; into CIO, G, A, D and Expansion areas for “**CV-Series**” PLCs; into IR, LR, HR, AR and DM areas for “**C-Series**” and “**C200HX,C200HG,C200HE**” PLCs; into IR, LR, HR, AR, DM and EM areas for “**CQM1**” PLCs - the Server at first reads a word (including the corresponding bit) from the PLC. Then according to the new bit value to be written this received word is modified and written back to the PLC. It means that 16 bits are written to PLC instead of 1 bit. If PLC program modifies this word contents between above mentioned read and write commands, it can cause incorrect execution of PLC program. It is recommended to write the whole word (where it is possible) instead of separate bit writing - it will improve the performance of the Server.

Note: *The results will be unpredictable if you use the OMRHLINK Server to write to discretets which are also being used in a ladder logic program. For better results, avoid this practice.*

3. Some suggestions for processing of alarms (Discrete values)

The following actions are recommended if different time intervals must be used to read Integer and Discrete values:

- create two different topics for the same PLC and use greater "Update Interval" for topic with Integers (for example 3000 milliseconds) and smaller "Update Interval" for topic with Discretets (for example 500 milliseconds);
- if possible then put together all Discretets in one memory area at consecutive addresses (may be in the PLC program) to minimize number of read messages sent at smaller "Update Interval".

4. Other suggestions

For great InTouch applications it is recommended to decrease the amount of log information used for historical trending - historical trends are stored on the disk and therefore disk read/write operations will take more time as permissible. If there are problems with the speed of screen redrawing then possible solutions would be the decreasing of total amount of redrawn information (specially texts) or the increasing of Server timing values "Protocol Timer Tick" and "Update Interval".

Troubleshooting

WIN.INI entries

The first time you run the OMRHLINK Server configuration, most of the items in the following list will automatically appear in the WIN.INI file, located in the MS Windows NT system directory (e.g. C:\WINNT). It is an ASCII file and can be altered manually if you wish with any text editor, e.g., MS Windows Notepad (*do not use a program that formats text, such as MS Word or Write unless the file is saved as a DOS text*). The following is a typical entry for the OMRHLINK Server:

```
[OMRHLINK]
ConfigurationFile=C:\OMRHLINK\
WinIconic=0
WinFullScreen=0
WinTop=112
WinLeft=0
WinWidth=200
WinHeight=168
```

There are following additional WIN.INI entries available for the OMRHLINK Server:

SlowPollRetries and SlowPollInterval

The **SlowPollRetries** entry is used to enter the number of consecutive error retries for one topic (controller). If after **SlowPollRetries** there is still no successful response from PLC, then this topic is changed to *slow poll mode*. The WIN.INI file **SlowPollInterval** entry is used to enter the slow poll mode update interval (in seconds).

The default values (they are used if WIN.INI file does not contain these entries) are **SlowPollRetries** equal to 3 and **SlowPollInterval** equal to 30 seconds.

For example, the following entries can be used to specify that slow poll mode 2 minutes will start after 5 consecutive unsuccessful retries:

```
SlowPollRetries =5
SlowPollInterval=120
```

Entering into slow poll mode is reported to WWLogger and (or) to OMRHLINK Internal Logger by following string like following:

```
"Set slow poll mode - poll after each 120000 msecs. Stop error logging to Topic 'PLC1' (COM1)."
```

Leaving the slow poll mode is reported to WWLogger and (or) to OMRHLINK Internal Logger by following string:

```
" Leaving slow poll mode on topic "PLC1", port "COM1"."
```

Note!

The built-in discrete item **STATUS** value will change to 0 (OFF) simultaneously when Topic is changed to slow poll mode.

WriteRetryIndefinitely and ConsecutiveWriteErrors

The **WriteRetryIndefinitely** entry is used to enable or disable the deleting of pending write messages if PLC does not respond or respond with error response (for example, if trying to write into inaccessible data or memory area in the PLC). As default (no **WriteRetryIndefinitely** entry in WIN.INI file or **WriteRetryIndefinitely=0**) all write messages for this topic will be deleted after **ConsecutiveWriteErrors** retries. The default **ConsecutiveWriteErrors** value is 3 (no **ConsecutiveWriteErrors** entry in WIN.INI file or **ConsecutiveWriteErrors =3**). If the total amount of write messages in the list of pending write messages exceeds 300 then every write message is sent to PLC only once not taking into account the **ConsecutiveWriteErrors** value.

To disable the deleting of pending write messages, the following entry can be used:

WriteRetryIndefinitely=1

In this case all pending write messages will wait for execution forever.

Note! Be careful when using the **WriteRetryIndefinitely=1** setting if PLC is switched off, but client application continues to generate new values to be written to this PLC - it can cause the computer memory overload with memory allocated for write messages.

Troubleshooting menu

The following debugging choices are appended to the Server's System Menu (the menu that appears when you click on the "-" box in the upper left hand corner of the Server window):

Suspend Protocol / Resume Protocol - these choices permit you to turn protocol processing on and off, what means that you can suspend access to the PLCs; in **Suspend Protocol** state communication with **all** Topics is suspended (no read or write commands are sent to connected devices), but new write messages are still created for later execution when communication will be resumed.

Show Send - if checked then all outgoing data is displayed and logged.
Show Receive - if checked then all incoming user data is displayed and logged.
Show Errors - if checked then all information about errors is displayed.
ShowEvents - if checked then Server logs the information about situations when the total number of active (pending) write messages exceeds 300. It may happen when the Server has timing problems when executing write commands. When such warnings appear then it is recommended to modify the Server timing settings or to reduce the total amount of write data in the client application. Otherwise the possibility of losing write data increases. Also information about suspended and resumed topics is displayed if **ShowEvents** is checked.

ShowBadWrites - if checked then Server displays information about all situations when data write commands are not executed successfully and after **ConsecutiveWriteErrors** retries the write is rejected and write

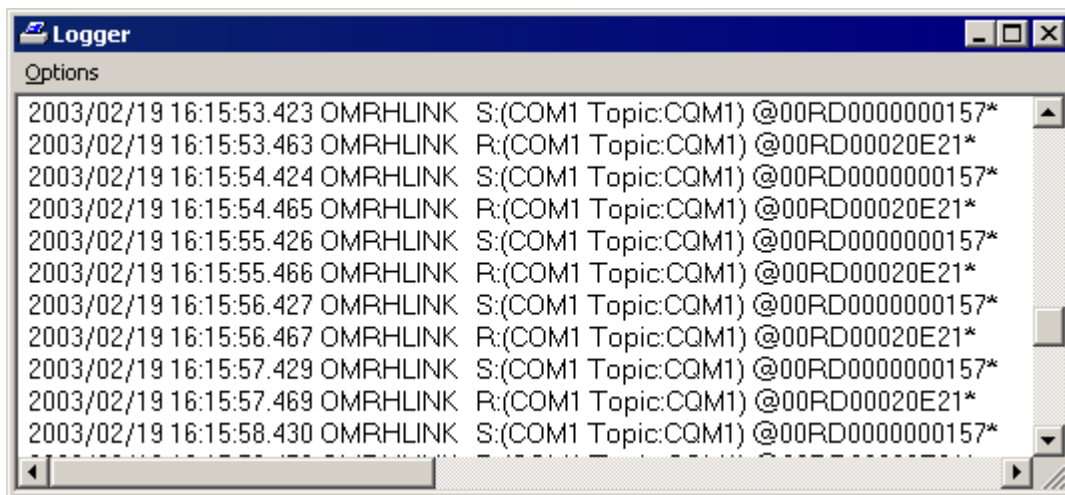
- message is deleted from list of active (pending) write messages. This option (if checked) is effective even if other error logging is stopped.
- ShowAllRejectedWrites** - this option is useful when communication with a separate topic (topics) is suspended by using SUSPEND item (see *Item Names* section) and the Server rejects each write to this topic (topics). If checked then information about each rejected write value is reported to WWLogger and (or) to OMRHLINK Internal Logger. If not checked then Server rejects each write to suspended topic(s) without logging any information.
- Verbose** - if checked then all information about errors (except errors indicated in other choices) is displayed. This option is useful for getting additional information about error situations:
- When this option is checked simultaneously with the option **Show Errors** then outgoing user data as well as incoming user data is displayed in addition to the error report. For some types of errors the Server gives explanation of possible error reason. If client application closes communication with a topic then the Server immediately deletes all this topic's messages from message lists. If write messages are still in the list of active (pending) messages these write messages are deleted without trying to execute them. If **Verbose** option is checked simultaneously with the **ShowBadWrites** option then information about not performed and deleted write messages is displayed.
- Show Logger** - if checked then OMRHLINK Internal Logger is activated/deactivated (see *Internal Logger* section below).
- Dump** - displays and logs all information about ports, active topics and items.
- DumpScreen** - if checked information about active topics and messages is displayed on OMRHLINK main window.

All debugging information (except **DumpScreen** option) is displayed via the Wonderware Logger (and also to OMRHLINK Internal Logger if **Show Logger** checked), which must be active for these commands to work.

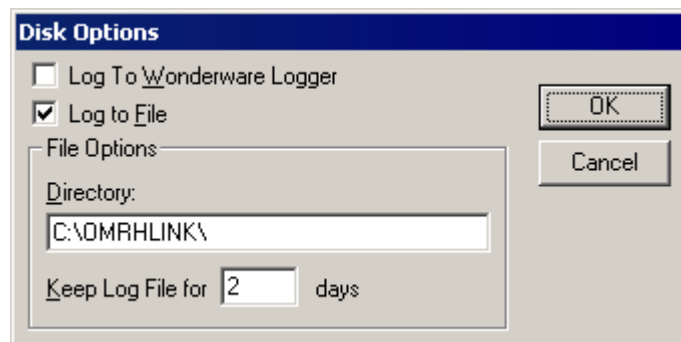
Warning: if you check **Show Send** and/or **Show Receive** debug output grows very fast.

Internal Logger

To enable the OMRHLINK Internal Logger, check the **Show Logger** option at the OMRHLINK Server System Menu (see *Troubleshooting menu* section above) - this command can be used to start/stop Internal Logger. The Internal Logger window looks like following:



To save Internal Logger information to file, select *Options/Disk Options...* from Internal Logger main menu – the “Disk Options” dialog box will appear:



The following can be entered in this dialog box:

Log to Wonderware Logger

If checked then debug information will be logged also to Wonderware Logger (if Wonderware Logger is installed).

Log to File

If checked then Internal Logger information will be saved to Internal Logger File. The OMRHLINK Internal Logger file name is created in the following format:

OMRHLINK _YYYYMMDD.LOGn

where **YYYY** is a year, **MM** is a month, **DD** is a day and **n** is a order number of consecutive OMRHLINK Internal Logger file, starting from 1. The OMRHLINK Internal Logger file maximum size is 16 MB; if there is more information logged then next

consecutive file is created, e.g. there can be consecutive files OMRHLINK_20030228.LOG1, OMRHLINK_20030228.LOG2, etc.

Directory

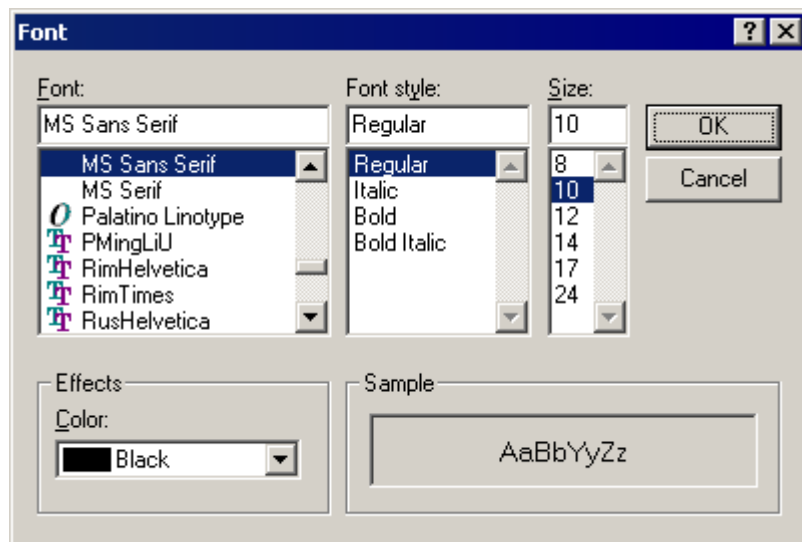
Enter the path where to keep the Internal Logger File.

Keep Log File for

Here the number of days how long to keep the Internal Logger File can be entered. After this number of days expires, the corresponding Internal Logger File will be automatically deleted. The default value **0** keeps Internal Logger Files forever - in this case they can be deleted manually.

Options/Font

To configure the font used by Internal Logger, select *Options/Font...* from Internal Logger main menu - the "Font" dialog box will appear:



KLINKMANN OY
OMRON Host Link Communication Server
Revision History

Feb 2003	Rev 1.0	First Release
Jan 2016	Rev 1.1	“Installing the OMRHLINK Server” section modified, “Licensing by using HASP HL key” and “Software license key” sub-sections added.